

BL

BLUE LETTER

October 2021

No. 3834



FROM THE DIRECTOR

Reflecting Back on 2021 with Appreciation

October has been a month for wrapping thing up. Harvest of most crops is underway or wrapping up for many of our agricultural specialists. We finally (after a yearlong delay) celebrated the 40th anniversary of the C.A. Vines Arkansas 4-H Center while raising money at the “Dinner at the Vines” event. AIMS reporting is complete, and program planning for the next cycle is underway. I am sure I am leaving many things out, but mainly I want to congratulate and thank everyone involved in these activities and the many more who contributed to a successful year for the Extension Service.

As I mentioned, AIMS reporting is complete, and the numbers look good. We had over 13 million contacts this year. Impact stories are either being written or submitted. These will tell the story of the good work we did this year under somewhat easier, but still difficult circumstances of COVID-19. Our numbers show an increase in online content produced by our specialists, agents and others. I started requesting this from everyone almost from my first day, and I appreciate the response and effort. In fact, we saw nearly a 75% increase in web-based training (via Zoom, Facebook live, etc.)!

Hopefully, you have taken the time to reflect on the successes of this year and have nominated someone for either an

Extension Excellence or Division award to recognize their contributions. I also encourage you to nominate a colleague for the various awards offered through your professional organizations. I have been asked to write several letters already this year, and it is something I almost never turn down if I am able. This is something I really came to appreciate later in my career and wish I had done more previously; we should make time to recognize each other in this way. With that in mind, I hope everyone will mark their calendar for our 2021 Extension Employee Conference at the Little Rock State Office and on Zoom on Monday, Dec. 6, at 10 a.m.

I want to welcome my new boss, Mr. Chuck Culver, to the Cooperative Extension Service. Hopefully, you tuned into On the Job with Bob and got to know Chuck a little better if you have not met him. I have known Chuck for a long time, and he understands the mission of Extension and will serve us well as interim vice president for agriculture.

Finally, I want to encourage and remind everyone to take time for their lives outside of work. Everyone needs a vacation at one point or another. Don't forget to use your vacation time and spend time with loved ones or to just recharge your batteries after fall work activities have died down or around the upcoming holidays. ■

INSIDE SCOOP

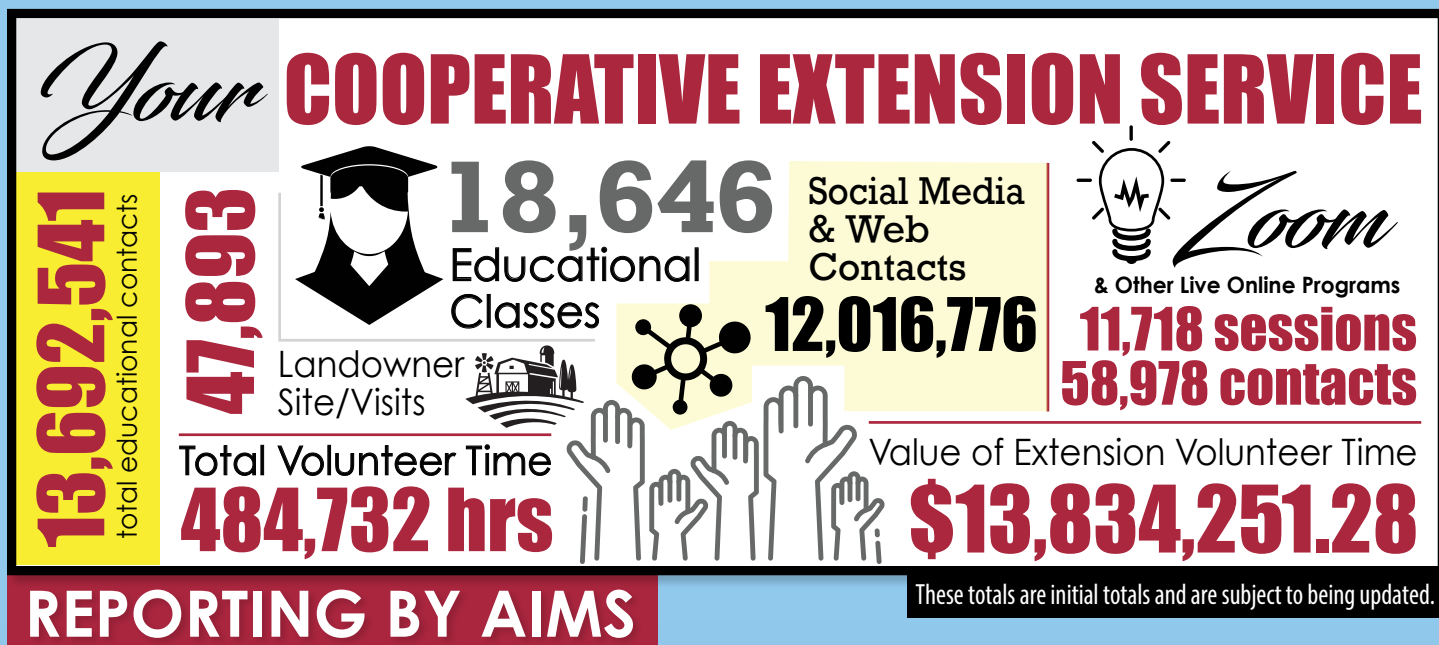
2. Aims Program Year Key Highlights
3. 4-H Junior Master Gardeners
4. Food Safety Outreach Grant Awarded
5. Jason Davis Speaks at Amazon Web Service Summit
6. Tech Corner
7. Leadership Lunch and Learn
8. ANR Educators Busy Year...
- And much more!

UofA

DIVISION OF AGRICULTURE
RESEARCH & EXTENSION

University of Arkansas System

2021 Program Year Key Highlights



Share Grounds in the News

+ Free Food Business Webinar

The Share Grounds has been getting some well-deserved attention lately. In the August edition of *501 LIFE* magazine, Dr. Amanda Philyaw Perez, Extension specialist and primary investigator of the Share Grounds project, shared the journey these innovative spaces have

taken over just a few short years to get to where they are today — helping more than 30 clients take the first steps to developing and producing local food products right here in Arkansas.

One of those clients, Legenia Spiller-Bearden of [Sincerely Legenia Keto](#), recently received her food manufacturing permit from the Arkansas Department of Health. She has been working hard to perfect her tasty blends of keto spice rubs at our commercial kitchen in McCrory. We love to see our clients succeed and take another step towards their dream becoming reality!

To continue the momentum of educating and assisting small food businesses in Arkansas, Dr. Philyaw Perez and her team will host a free workshop in November on how to make packaged food products at the Share Grounds. Please visit www.uaex.uada.edu/sharegrounds to learn more about this event and our resources for food entrepreneurs. ■



Dr. Amanda Philyaw Perez stands next to a poster display at one of the Share Grounds sites.

4-H Places 5th at National Contest



BL
3

Howard County 4-H members Adelene W., Alex T., and Sarah L. placed fifth in the National 4-H Food Challenge Competition held Sept. 28 at the Texas State Fair. Fourteen teams representing nine states competed in the challenge. Like the popular television show Chopped, teams were given a secret ingredient to create a dish utilizing pantry items, while staying within a budget.

In the first round, the Howard County team, who called themselves “Seniors with Spatulas,” created a vegetable pasta dish using a grain pasta. In 40 minutes, they developed a recipe, a 5-minute presentation about the nutritional value of the dish, serving sizes, food safety procedures taken, and how the dish fit into an overall healthy diet.

The Arkansas team advanced to the final round where the secret ingredient was sirloin steak. In this round, the group prepared a pepper steak stir fry.

This was the first year Arkansas has participated in the National 4-H Food Challenge. The team was coached by Howard County Extension Agent and Staff Chair Jean Ince and 4-H agent Samantha Horn. ■



Adelene W., Sarah L., Alex T. submitting entry during the final round.

4-H Junior Master Gardeners



Left to right: Bruce Schrader, Genevieve D., Acadia D., Abby R., Riviera D. and Emily R.

The Saline County 4-H Junior Master Gardeners recently visited the Avilla Community Garden, where they cleaned up garden beds from the summer season and planted autumn cover crops.

Saline County Master Gardener Bruce Schrader taught the youth about the importance of Austrian peas as a cover crop and the proper way to plant them. The 4-H members learned that Austrian peas are a legume, which means they “fix” nitrogen from their surroundings and store it within the plant.

4-H members learned while these cover crops don’t contribute much nitrogen to the soil while growing, they can be allowed to decompose or be tilled into the soil later to restore nitrogen, providing lots of nutrients for next year’s garden. ■

Extension Climate Action Team for Agriculture & Food Systems

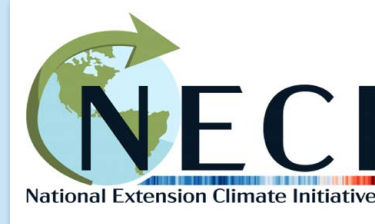
Climate change is an ever-increasing threat to the human population and the natural resources we use. The USDA NIFA Institute of Bioenergy, Climate and Environment (IBCE) has asked that land-grant system leadership respond to national climate action priorities. Dr. Scott recruited Drs. Mike Daniels and Amanda Philyaw Perez to join the national Extension Community of Practice on Climate Priorities. The ECOP and IBCE are working to advance energy independence and help farms, ranches, forests and rangelands adapt to climate change. Both groups are partnering on the National Extension Climate Initiative (NECI) to create a framework for outreach; climate literacy; workforce training in conservation and forestry; farmer, rancher, and forest landowner engagement; and development of Climate Hubs and a Civilian Climate Corps.

Dr. Philyaw Perez will serve on the Climate-Smart Agriculture and Food Systems committee. This committee aims to utilize the Extension system to support the

adaptation, mitigation and resilience of U.S. agriculture to climate change. Helping farmers, ranchers and land-owners adopt climate-sensitive practices on working lands will improve the profitability and sustainability of plant and animal systems in rural and urban environments. These practices will maintain adequate and safe food systems as supply chains strain under shifting climate conditions.

Specialists, agents, and program staff working on projects or research relevant to this topic or those interested in joining this national program should contact Dr. Philyaw Perez at aperez@uada.edu for more information.

For more information on USDA NIFA's Action Plan for Climate Adaptation and Resilience, visit <https://www.sustainability.gov/pdfs/usda-2021-cap.pdf> and NECI, visit <https://nationalextensionclimateinitiative.net/>. ■



Food Safety Outreach Grant Awarded

USDA NIFA recently announced awards of \$10 million to 21 grants for food safety outreach, training and education projects. The funded projects aim to develop and deliver food safety training related to compliance with the Food Safety Modernization Act. Jennifer C. Acuff, food microbiologist in the Department of Food Science with a research, extension, and teaching appointment, is a co-PI on an outreach project awarded nearly \$400,000. Acuff's project is titled "Customizing Current Good Manufacturing Practices Training and Education for Small and Very Small Food Facilities across the U.S."

The collaborative, multi-state project will address the challenges that smaller processors have in accessing and

delivering training materials relevant to their process and employees by

1) conducting readiness assessments, 2) determining best formats for training materials, 3) identifying barriers to training accessibility, 4) identifying most common compliance deviations, and 5) developing training materials in both English and Spanish. Collaborators are from New Mexico State, University of Arkansas, University of Nebraska-Lincoln and University of Rhode Island.

The project is expected to positively impact smaller food processors in Arkansas. Full Press Release: <https://nifa.usda.gov/press-release/nifa-invests-10-million-food-safety-outreach-training-and-education>. ■



iLEAD Session

Ethics, Issues, & Education

iLEAD Cohort I learned about ethical leadership, challenges and opportunities facing the University of Arkansas System Division of Agriculture and differences between leaders and managers in a virtual session on Sept. 17.

Dr. Jean-François Meullenet, senior associate vice president -research, and Dr. Bob Scott, senior associate vice president -extension, shared information with the group about UADA opportunities and challenges including technology and equipment, funding and human capital. Both noted the Division currently has numerous positions available. See job listings [here](#).

Dr. Kristi Farner, University of Georgia staff development specialist, discussed the difference between management and leadership. She said, "Each has its own function and characteristic activities. The real challenge is to combine strong leadership and strong management and use each to balance the other."



Dr. Karen Ballard, program and staff development professor, provided information about ethical leadership. iLEAD Cohort I members were introduced by Ashley Henderson, program specialist, to the Workday Learn program.

The iLEAD program provides professional development opportunities to support employee retention. For more info about the iLEAD program contact Dr. Julie Robinson, jrobinson@uada.edu or Lisa Davis, ldavis@uada.edu. ■

Jason Davis Speaks at Amazon Web Service Summit

Artificial intelligence and machine learning - whether we realize it or not, these technologies are increasingly integrated into our daily lives through targeted advertising in social media, suggested items in online shopping,



and the countless mobile apps that entertain us. Similar technologies have incredible potential to revolutionize production agriculture. Jason Davis spoke at the Amazon Web Service (AWS) Summit hosted in Washington D.C. about one such example. Work currently being conducted uses machine learning algorithms to detect weeds and their location in drone imagery from soybean fields. Taking the results to the field, a research sprayer modeled after commercially available equipment can then spot treat weeds automatically by reading the weed maps output from the process. These technologies enabling site-specific weed applications are just around the corner for our producers offering the hope of reduction in both environmental impact and input costs. This project aims to better understand the potential and limitations of these types of applications and technologies ahead of our producer's adoption. ■



Introducing KnowBe4 Information Security Training and Awareness Program

The Division's IT Services departments (CES and AES) are happy to announce a partnership with KnowBe4 as part of our ongoing commitment to information security training and awareness.

In the coming weeks and months, our offices will begin to deploy KnowBe4 training tools across our campuses. These tools will empower our offices to assess the strength of our existing information security culture, to identify areas for improvement, and to prepare members of our organization to safely navigate the rapidly evolving information security landscape.

Email notifications have already been sent for our annual security training. Follow the link and login with your AD credentials. For more information, check out our webpage - <https://employees.uada.edu/knowbe4>.



TECH ME Seriously

Check out the latest TECH ME Seriously vlog post: [How to Submit an Event to the UADA Calendar](https://employees.uada.edu/techmeseriously). Visit <https://employees.uada.edu/techmeseriously> to view vlogs.

What's Up with the Website?

Working together to improve access for all site visitors!

1. To improve our accessibility score, in the coming few months, we will tighten rules on the files posted to the site. If you create files (Word, PowerPoint, Excel, Adobe), you are responsible for making them accessible. Files posted to the website that aren't compliant will eventually be removed.
2. We check file accessibility for website content using software called Ally. All web users will be required to log into Ally regularly and maintain a high accessibility compliance score.

We are currently looking for a new accessibility specialist. In the meantime, reach out to Amy Cole and Kristena Merritt with digital media accessibility questions.

3. We no longer use Monsido for website analytics. Request analytics using the form on this page employees.uada.edu/websitehelp.

Remember – if you edit the site or manage people who do, make sure to attend our Website User group meetings or watch the recordings posted to the Tech Training webpage <https://uada.edu/employees/information-technology/tech-training/>.

Multi-factor Authentication is Here for Constant Contact!

MFA protects against unauthorized access to your contacts, emails, billing information, and any other data stored in your account, even if your password is compromised.

What Does it Mean for You?

You will need to enable MFA now for your own account. Please note that you'll only be able to set up MFA (or be prompted once it's required) by logging in from Constant Contact's website. We will soon be turning this on for existing accounts.

What if I Share an Account?

If you are sharing a Constant Contact account login with multiple users, you must set up user roles under your account so each user will have separate login credentials and can use their own device for MFA. With user roles set up, you won't have to rely on one person for the verification code. For help setting up MFA or user roles contact Kristena Merritt at kmerritt@uada.edu

Zoom Pro Tip

How to Collect Attendee Demographics

Check out the following new resources to help you collect and report the demographic information of Zoom meeting attendees: [Scheduling Meetings with Registration & Saving the Template](#) [How to Generate Zoom Reports](#). ■

2021 TECH TUESDAYS WEBINARS

Register and join us Nov. 9 for our Tech Tuesday webinar on PowerPoint.

Did you miss the Tech Tuesday "Making Outlook Work for You" webinar? Check out the blog post [here](#).

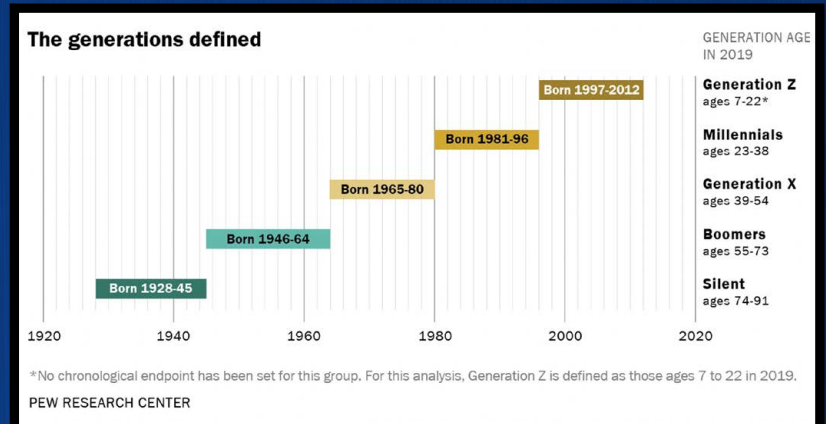


Working with Gen Z

In the latest Leadership Lunch and Learn, Miller County 4-H Agent Hanan Douglas provided insight into characteristics of Gen Z, what their expectations are in the workplace, and what they bring to the workplace.

Generation Z is the newest group to enter the workforce. According to the Pew Research Center, this generation was born between 1997 and 2012.

Gen Zers are the most diverse generation yet as one in four members are Hispanic. Whites make up 52 percent of the group as compared to 70 percent of Gen Xers. Gen Z members are more likely to be enrolled in college and to have



Graphic shows approximate age ranges for each generation from 1928 to current generation Z.

a college-educated parent than Millennials or Gen Xers at a comparable age. [Read details](#) or [watch session](#). ■

LeadAR Class 19 Goes to Washington

Washington, D.C. is a place like no other. It's the epicenter of global politics and a hotspot for art, activism and public service. A visit to the nation's capital as part of the LeadAR program is one aspect that makes the LeadAR program stand out from other local, state and national leadership development programs.

When asked what the National Study Tour meant to them, one member of LeadAR Class 19 said, "I was honored to be able to participate in the LeadAR National Study Tour. Spending a week with my cohorts in the nation's capital was such a valuable and memorable life experience. I walked away with a better understanding of how Arkansas is represented in D.C. and with a deeper appreciation for the work being done on Capitol Hill."

LeadAR participants were in D.C. from Sept. 19-25,



learning about current issues facing the nation, accessing unique cultural experiences, and make lasting memories with their classmates. ■

ANR Educators had a Busy FY (Fiscal Year)

ANR educators Andy Vangilder, and Hank Chaney utilized experienced county agents to conduct peer-to-peer zoom training for new agents in row crops, animal science and soil fertility. They worked closely with Extension specialists to conduct 20 in-field trainings on topics including rice bill bug damage in row rice; rice and soybean weed control; soybean tap root decline; fall armyworm control; blackberry variety selection, southern blight in tomatoes and squash bug control; cotton and peanut weed control; potential of the Thyrvon insecticide trait in cotton; peanut production and pod blasting and rice disease identification and fungicide timing to control rice sheath blight and blast.



Andy Vangilder

Vangilder and Chaney also made weekly visits to

strengthen agent knowledge in cotton, rice, and peanut production by establishing 27 demonstration/multiplier fields. They also secured pH and salt meters for 37 rice growing counties: 1,250 signposts and soybean seed for agents in 25 soybean growing counties. ■



Hank Chaney



Dr. Tommy Butts (right) discusses rice weed control with agent during rice weed control in-field training.

Johnson Co. 4-Hers Show Entrepreneurial Spirit

Some of Johnson County's 4-H members are promising future business owners. Penny H. got inspired at an Artisan Camp at the 4-H Center to take a craft she has loved making for years and turn it into a small business. She teamed up with a friend and made a business plan on how to create, market and sell slime. Now she is successfully taking on a leadership role in her club and making a few extra bucks in preteen spending money.



Penny H. (left). presenting to her club on how to turn your craft ideas into a small business.

Emma and Ella L. took their love for crafting and turned it into a small business for a good cause. They made small crafts this summer and then arranged with a local restaurant to set up a booth to sell their items. They donated all their profits to their community to help with the installation of a new playground. These young people are truly making the best better. ■



Left to right: Ella L. and Emma L. presenting their donation for the playground.

Awards of Distinction

The Department of Animal Science with the University of Arkansas System Division of Agriculture and the Dale Bumpers College of Agricultural, Food and Life Sciences recently announced its 2021 Awards of Distinction in a reception at the Don Tyson Agricultural Center in Fayetteville.

The Awards of Distinction recipients were: Graduate of Distinction, Scott Fry; Advanced Graduates of Distinction, Tim Crawley (M.S.) and Dr. Ty Baublits (Ph.D.); and Friend of the Department, the Gary and Gaywyn Golden Family.

The Graduate of Distinction Awards recognize animal science alumni who have impacted the field of animal science, contributed to their community, and serve as role models for current and future animal science students. The Friend of the Department is someone who has specifically supported and/or made significant contributions to the Department of Animal Science.

Jiangchao Zhao was also recognized with the Early Career Recognition of Professional Excellence (RoPE) Award from the Arkansas Agricultural Experiment Station.

Scott Fry – Graduate of Distinction



Scott Fry

Fry is a native Arkansan who received his B.S. in animal science (2005) from the University of Arkansas. During his time at the U of A, Fry held leadership roles within Alpha Gamma Rho and served as a Bumpers College Ambassador. In addition to growing up on a family beef cattle operation, Scott's exposure to undergraduate

research projects and great mentors in the Department of Animal Science led to his interest in pursuing graduate degrees in animal science. He completed his M.S. (2007) and Ph.D. (2010) in animal science and nutrition from North Carolina State University (NCSU), where his research focused on trace mineral metabolism in cattle and swine. While at NCSU he taught undergraduate animal nutrition and husbandry classes, and volunteered at local 4-H youth events.

After completing his graduate program, he held swine research and technical roles at both Cargill Animal Nutrition and Elanco Animal Health. Currently he is the director of technical service for micronutrients, a global leader in trace mineral nutrition, where he works across beef, dairy, swine

and poultry segments in the U.S. In this role, Fry oversees a team of technical managers responsible for supporting sales and marketing, and conducting research with key universities and research organizations. In addition to leading this team, Scott supports functional areas of the business and is involved in new product development. Fry has conducted trace mineral and feed additive research in ruminants, swine and poultry, and has authored or co-authored over 30 peer reviewed papers.

Fry and his wife Kayte (Arkansas '06) live outside Raleigh, North Carolina, with their two boys, Henry and Harrison.

Tim Crawley – Advanced Graduate of Distinction (M.S.)

Timothy L. Crawley received his B.S. and M.S. degrees in animal science from the University of Arkansas. His research focus was on methods of freezing and thawing embryos. After attaining his master's degree, Crawley was employed as manager of the Arkansas Dairy Herd Improvement Association. He left this position to work as a metering sales representative for the National Dairy Herd Improvement Association and traveled to New Zealand, throughout the United States and to nearly every providence in Canada.



Tim Crawley

In 1995, Crawley married Nikki Stewart. They returned to the dairy business, care for his family's 650 acres and built his herd back to 300 cows. Their daughters, Jessica and Brittany, grew up on the same land as Tim, and were homeschooled by their parents within walking distance of their grandparents. Jessica graduated from the College of the Ozarks with a degree in dairy science. Brittany earned her degree in agricultural business from the U of A.

Over the years, he has served as a member of the board of directors for the American Milking Shorthorn Society, Midwest Dairy Association, Heart of America DHIA, Farm Credit of Western Arkansas, Benton County Farm Bureau, Benton County Fair Board and Farmers Cooperative Association. The Crawley Family was awarded the Northwest District Farm Family of the Year in 2005 and recognized as the 2020 Member of Distinction for the Southeast Area of Dairy Farmers of America.

Awards of Distinction

Continued

Ty Baublits – Advanced Graduate of Distinction (Ph.D.)

R. Ty Baublits received his A.S. from Garden City Community College in 1999 and B.S. in animal science from Oklahoma Panhandle State University in 2001. He received his M.S. and Ph.D. in animal science from the University of Arkansas in 2003 and 2006, respectively.



Ty Baublits

After completing his graduate work, Baublits was employed as a food scientist in Research & Development at Tyson Foods. He has held various positions in R&D at Tyson Foods and is currently senior director, Central Research and Fresh at Tyson Foods. In his current role, Baublits leads a team of 20 scientists conducting research and developing products in product areas, including retail case ready beef and pork, retail tray-pack poultry and poultry rendering. Additionally, he leads a team of scientists devoted to research and operational support of Tyson Foods' poultry food safety systems and scientists devoted to research in sustainability for Tyson Foods. He also leads a team of scientists devoted to functional ingredient research

to enhance shelf life and product quality to minimize food waste. Baublits has numerous published research articles and patents through his research tenure as well as significant financial savings and value-added product sales that have been achieved during his tenure at Tyson Foods.

Ty is married to Crystal and they have three boys, Owen, Hayden and Chance.

Gary (posthumously) and Gaywyn Golden Family – Friend of the Department

Gary was the first in his family to go to college, beginning at Southern Arkansas University where he met Gaywyn. After their marriage, he transferred to the U of A, where he received a degree in animal science in 1974. Later, in 2012 he was named a U of A Department of Animal Science Graduate of Distinction. Gary was honored to serve on the Board of Trustees at SAU. Gary was vice chair and chief executive officer of First State Bank of DeQueen, where he had worked since 2001. He was a member of First Assembly of God Church in DeQueen. Church was a priority in Gary's life and he proudly served on committees, church boards and was a deacon through the years. In 2019, the Golden's established the Gary L. and Gaywyn Golden Family Endowed Scholarship in Animal Science. ■

Animal Science and AR Cattlemen's Association

Host Webinars

The U of A System Division of Agriculture, Department of Animal Science recently teamed up with the AR Cattlemen's Association to provide two educational opportunities via ZOOM. The title of the series was Dollars & Sense for Cow/Calf Producers.

- The first webinar, "Risk Management for Cow/Calf Producers" on Sept. 28 had 83 registrants. To access the recorded webinar, go to: - <https://uada.hosted.panopto.com/Panopto/Pages/Viewer.aspx?id=38764681-b449-4976-920d-adb2002786a6>.
- The second webinar in this series, "Fall Cattle Marketing Update" was held Oct. 5 with 101 registered for the event. To access the recorded webinar, go to: <https://uada.hosted.panopto.com/Panopto/Pages/Viewer.aspx?id=e7b3ae45-8c5e-48a6-aaceadb900316690>.

[Viewer.aspx?id=e7b3ae45-8c5e-48a6-aaceadb900316690](https://uada.hosted.panopto.com/Panopto/Pages/Viewer.aspx?id=e7b3ae45-8c5e-48a6-aaceadb900316690).

For more information on these webinars, please contact Dr. Shane Gadberry (sgadberry@uada.edu). ■



Strengthen Business Through Chamber Support

CREATE BRIDGES recently conducted two workshops for chambers of commerce in the Ozark Foothills (Fulton, Izard, and Sharp Counties) and 3Cs (Little River, Howard, and Sevier Counties) as part of a chamber development program called CREATE FORCE (Celebration Retail, Accommodations, Tourism, and Entertainment by Fostering Opportunities for Rural Chamber Excellence).

Shelley Short, vice president of programs and partnerships at the Arkansas State Chamber of Commerce and Executive Director of Arkansas Economic Developers and Chamber Executives (AEDCE) and Jim Fram, President/CEO of Community Growth Strategies shared their expertise with participants in both regions. In addition to the workshops, each chamber had the opportunity to attend one of two professional development opportunities; AEDCE's annual conference, or New Chamber Professional Boot Camp

in Little Rock. In addition, participating chambers had the opportunity to sign up for three, one-hour, follow-up consultations with Jim Fram provided through CREATE BRIDGES. Shelley and the CREATE BRIDGES team are slated to record a conversational version of her presentation utilizing UAEX's Communication suite later this fall. This informal presentation with Q&A will be directed toward small-to medium-sized, rural chambers across Arkansas. For more information, contact Brandon L. Mathews at bmathews@uada.edu ■



Left to right: Presenting, Jim Fram (Community Growth Strategies) and Brandon L. Mathews (UAEX) chairs: Chamber of Commerce Representatives.

Soybean Science Challenge

Participates in Environmental & Sustainability Field Trip

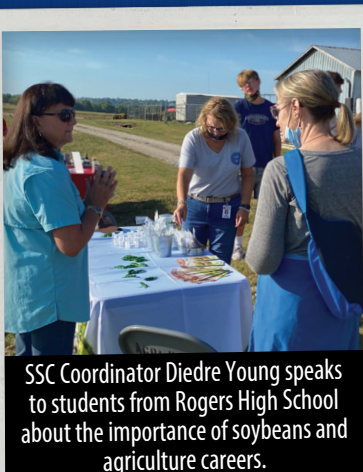
Soybean Science Challenge Coordinator Diedre Young participated in the U of A-Fayetteville Environmental and Sustainability field trip on Oct 1. More than 90 students and teachers from Rogers High School attended the event where they learned about agricultural research, agricultural careers, and crop production and sustainability. Young discussed the importance of soybeans to Arkansas and how the agricultural sector needs students to consider a

career in agriculture. Teachers and students also received soybean products, materials and resources.

The Soybean Science Challenge (SSC) is a farmer-funded, statewide, high school education program that seeks to increase student knowledge about the value of Arkansas soybeans to the Arkansas economy, to the labor force, and ultimately to feed and fuel the world.

The Soybean Science Challenge is a partnership between the Arkansas Soybean Promotion Board and the UofA Cooperative Extension Service.

For more information, contact Dr. Julie Robinson, jrobinson@uada.edu or Diedre Young dyoung@uada.edu ■



SSC Coordinator Diedre Young speaks to students from Rogers High School about the importance of soybeans and agriculture careers.

4-H Clubs Visited the Richland Creek Farm



Far left, members from the HG Squad 4-H club on the train tour eat their watermelon treats. Middle photo shows members of HG Squad and JMG clubs playing in the big sandbox. Far right, Haelyn S. runs through one of the tunnels. Fun had by all.

Union County 4-H Clubs recently toured Richland Creek Farm where they got to experience muscadine vineyard, pear trees, may haws, goats, a horse and chickens. They collected eggs and had plenty of play opportunities — a rope obstacle course, a big sand box with a slide, a hay and barrel tunnel, swings, and games. They also got to ride the Richland Creek Railroad (barrel carts pulled by a tractor.) The visit ended with homemade candy treats, fresh watermelon, and a ride back to the parking area. The Rudder Family out did themselves with the fun. ■



Grants and Contracts

PROJECT TITLE	AWARD AMOUNT	PI	GRANTING AGENCY
Assessing Blackberry Fruit Quality	2,500	Amanda McWhirt	Virginia Polytechnic Institute & State University
4-H Mentoring Program - Year 11	61,167	Angie Freel	National 4-H Council
Farm Stress Management	8,867	Brittney Schrick	The University of Texas Health Science Center at Tyler
eXtension EXCITE Activity 2	196,168	Bryan Mader	Extension Foundation
2021 Arkansas Extension Implementation Project	180,000	Glenn Studebaker	National Institute of Food & Agriculture (NIFA)
Monsanto Service Order 139 - MON 88702 Baseline Monitoring	11,305	Gus Lorenz	Monsanto Company
Beginning Farmer Education & Mentoring	314,485	Julie Robinson	Natural Resources Conservation Service (USDA NRCS)
Fatty Acid Formulation for Livestock Fly Control Phase II	101,489	Kelly Loftin	STRATACOR, INC.
4-H Tech Changemakers 3.0	155,000	Lori Canada	National 4-H Council
Holistic Benefits of Soil & Water Conservation	492,045	Mike Daniels	Natural Resources Conservation Service (USDA NRCS)
Monitoring Edge of Field Water Quality on Discovery Farms	103,775	Mike Daniels	Natural Resources Conservation Service (USDA NRCS)
Southern Regional Risk Management Education Center	2,205,700	Ron Rainey	Southern Regional Risk Management Education Center
2021 Margaret A. Cargill Philanthropies Counselor & Access to Maximize Participation (CAMP II)	6,000	Shannon Caldwell	National 4-H Council
The Southern Plant Diagnostic Network	39,500	Sherrie Smith	University of Florida
Tools for Cercospora Leaf Blight on Soybean	60,000	Terry Spurlock	Louisiana State University
Statement of Work #2021-01 - Herbicide COI Trials	4,000	Tom Barber	Pioneer Hi-Bred International
Comparison of Inzen, Igrowth & Double Team Sorghum	10,000	Tom Barber	United Sorghum Checkoff Program
Development of Disease Management	30,000	Travis Faske	Arkansas Peanut Growers Association
Irrigation Water Management Specialist	190,476	Vic Ford	Natural Resources Conservation Service (USDA NRCS)
TOTAL AWARDS FOR SEPTEMBER 2021: \$4,172,477			

Benefits Corner

Benefits Open Enrollment Dates – Oct. 25 – Nov. 12, 2021

Open Enrollment is your once-a-year chance to add, drop or change your benefits coverage. Elections made during open enrollment will be effective Jan. 1, 2022. Be sure you and your family have the coverage you need for the coming year!

Open Enrollment is also your once-a-year chance to elect contributions to a Healthcare and/or Dependent Care Flexible Spending Account. Your contribution elections don't roll over year to year.

Considering retirement at the end of the year?

Reach out to yourbenefits@uada.edu before submitting a retirement election in Workday. Keep in mind Winter Break 2021 runs Dec. 24-31.

Christmas Day will be observed on Monday, Dec. 27, and New Year's Day will be observed on Friday, Dec. 31. To receive holiday pay, employees must be in a paid status (not on leave without pay) on the employee's normally scheduled workday before the holiday and the normally scheduled workday after the holiday. If you retire at the end of the year, you must work on or be on annual leave on Dec. 23 and Jan. 3 in order to receive holiday pay for the winter break.

For more information, visit <https://uada.edu/employees/public/holiday-schedule.aspx>. ■



Personnel Changes

Welcome Aboard:

Savanna George – PTAC - Program Technician, Community, Professional, & Economic Development, Little Rock

Grant Hampton – Program Associate - Rice Agronomy, Crop Soil & Environmental Science, RREC, Stuttgart

Ryan Keiffer – Program Associate - Horticulture, Little Rock

Wanda Lock – Administrative Specialist III, Searcy County

Sarah Stone – County Extension Agent - Agriculture/4-H, St. Francis County

Kimberly Ricker – Administrative Specialist I, Clay County

Farewell to:

Joseph Paul Schafer – Program Associate - Entomology & Plant Pathology, Lonoke Agricultural Center

Norwyn Free – Program Associate - Verification & Sustainability Coordinator

- Crop, Soil & Environmental Science, Jackson County

Dee Beam – Accessibility Specialist - Information Technology, Little Rock

