

# BL

## BLUE LETTER

July 2024  
No. 3867



FROM THE DIRECTOR

# Bright Expectations

A few nights ago, I was puttering around the house with one of the local television stations on in the background. I wasn't really paying attention to it until I heard the screeching of a weather alert. I went into the bedroom where the tv was to better hear the alert. It was a flash flood warning for several counties in the north central part of the state. I called my mom the next afternoon to see how she had made out through the storm. She reckoned that it had rained eight or nine inches there in Timbo, but she wasn't sure because her rain gauge had overflowed. Looks like Mom will get an unusual mid-summer respite from watering her garden, which is nice. The rain wasn't quite as nice up the road in Marion County. They had an honest-to-goodness flood that forced an evacuation of a nursing home and a temporary closure of our Extension office there. Would you have ever imagined flash floods and overflowing rain gauges in the middle of July in Arkansas? I certainly wouldn't. July is when you pray for rain, not when you pray for it to stop. Sometimes we get more than we bargain for, for better or worse.

I had a nice opportunity this month to visit with another group that I think probably got more than they bargained for this summer – in the best possible way, I hope. Our summer interns came to the state office in early July and had lunch with several Extension retirees. It was a rare treat

to get to see these young people in the middle of their first professional experience with CES engage with retirees having the perspective of decades-long careers with the organization. What was probably most impressive to me is that the common denominator on both sides of that significant generational divide was tremendous enthusiasm. Young interns and not-quite-as-young retirees alike had found plenty to sink their teeth into in Extension work.

A common theme from the interns was their surprise at the scope of our organization's mission. The varied nature of the work and the breadth of issues and problems that we are called on to address was a revelation to them all. In most cases, it sounded like they had gotten more from the summer than they had bargained for. The various internship opportunities that are available in Arkansas CES represent exciting, maybe even life-changing, experiences for these students. A lot of hard work goes into these programs. County agents, district directors, specialists, and support staff are all involved in making sure that interns have an exceptional education experience during their time with us. This effort pays off, though. Several of our past interns have already come back to us as full-time employees. I fully expect to see at least a couple of Extension careers launched out of this year's cohort, and that is definitely something to look forward to. ■

## INSIDE SCOOP

2. District 4-H ORama
3. Out-of-this-World BBQ
4. Livestock Judging Camp
5. Leadership Log
6. Tech Corner...And much more!
7. Discovery Farm Field Day  
...And much more!





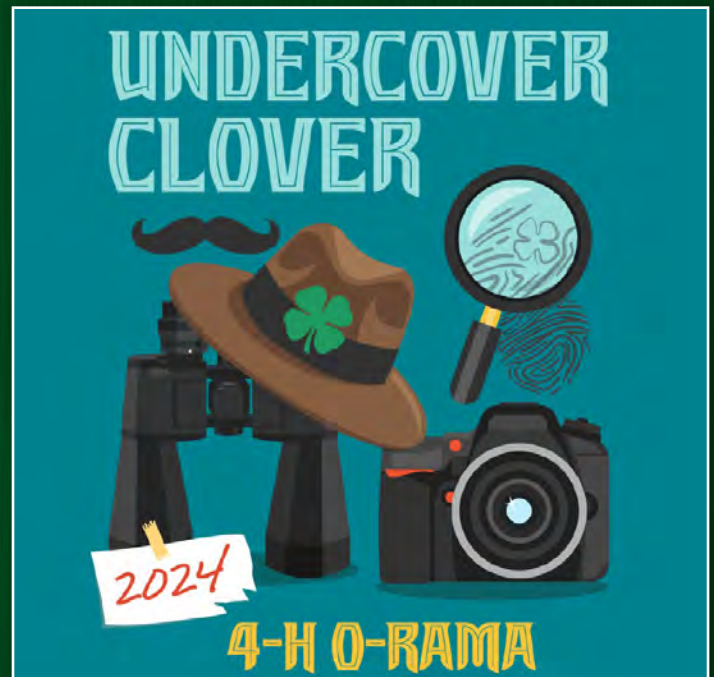
# District 4-H O Rama

Junior and senior 4-H members had the opportunity to “**uncover their potential**” at the District O-Ramas held June 18-20. The events provide opportunities for 4-H members to display skills developed through their project work in a variety of competitive contests such as public speaking, health, performing arts and wildlife. More than 1,400 4-H members, volunteers, parents and county extension staff attended the three district events. In addition to competing in more than 25 contests, the 4-H members cast ballots for vice presidents using electronic voting machines. The District Vice president Elects are:

- **Ozark District** — Sulli Schaffer, Benton County
- **Ouachita District** — Christian Trombley, Howard County
- **Delta District** — Caitlin Cooper, White County.

A new addition to the event was the District Community Service Food Drive. At each district O-Rama, participants collected and donated items to benefit local organizations. Miller, Faulkner and White counties collected the most items for their respective district. Also new this year was the addition of a spirit competition. The winners were Sevier County for the Ouachita District; Washington County

in the Ozark District; and Greene County in the Delta District. The top seven place senior winners in each contest advanced to the State 4-H O-Rama held July 23 at the University of Arkansas in Fayetteville. ■

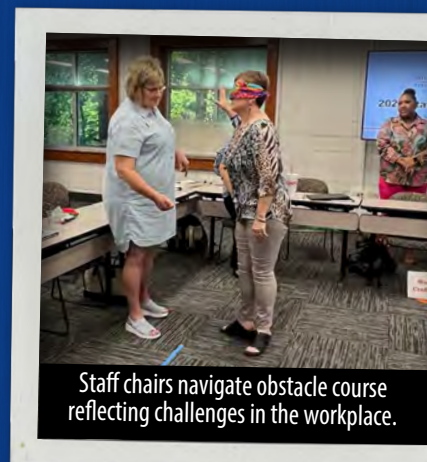


## Staff Chair Training

Extension county staff chairs attended the 2024 Staff Chair Training on June 12-13 at the Little Rock State Office. The two-day training featured sessions on civil rights yearly assessments, the employee performance review process, use of county carry-over and

operating budgets, AIMS reporting, records management and hiring basics, civility in the workplace, communication and conflict resolution, county appropriations, Workday approvals.

The training was coordinated by the District Offices and Community, Professional & Economic Development with support from staff in the Business Office, Human Resources, Administration and the Office of Inclusion, Access & Compliance. ■



Staff chairs navigate obstacle course reflecting challenges in the workplace.



Closing session of 2024 Staff Chair Training.



# Reciprocal Meat Conference Attended

Students and faculty from the Departments of Animal Science, Food Science and Poultry Science represented the University of Arkansas System Division of Agriculture and Bumpers College at the American Meat Science Association's Reciprocal Meat Conference (RMC) in Oklahoma City.

Seven students competed in the Meat Science Quiz Bowl Competition and tied for seventh place out of 37 teams. Team members included Ashley Rivera Pitti, Cason Frisby, Carson Taylor, Eva Berryhill and Coach Stephanie Shimer.

## Iron Chef Competition:

- Champion Iron Chef team member (Undergraduate category) — Ashley Rivera Pitti and Jimena Rodriguez
- Champion Iron Chef team member (Graduate category) — Paul Dahunsi and Stephanie Shimer

## Processed Meat Competition:

- 9th overall Graduate student category: Stephanie Shimer.

Division faculty were involved, including Drs. Kelly Vierck, Derico Setyabrata, Morgan Denzer and Casey Owens. ■



Students selling the U of A Meat Science t-shirt during the Reciprocal Meat Conference Picnic!

More than 1,050 people attended the conference, which included scientific sessions, a career fair, picnic and silent auction.

# Out-of-this-World BBQ

Two 4-H members are headed to the national 4-H BBQ competition later this year, after winning top honors at the state 4-H BBQ competition held June 21-22 in Rogers. The competition is held annually in conjunction with the Poultry Federation's annual Poultry Festival in Rogers. This year, 15 senior division 4-H members advanced from the district competitions to compete at the state level.

Laney S. from Sebastian County took top honors in the BBQ turkey competition, and Sarah L. from Howard County won first place in the BBQ chicken.



Competitors in the state 4-H BBQ cook off after the awards banquet.



Two of the posters created for the poster portion of the BBQ cook off competition.

Both contests test participants' skills in barbecuing, preparing food and demonstrating knowledge of food safety. They also must do some research and get creative in producing an informative poster board to highlight either the chicken or turkey industry in Arkansas. As an added twist, the poster must match the festival's theme, which this year was "Space Cowboy."

Read more about the winners tricks and tips [here](#). ■

# Livestock Judging Camp Helps Youth

Extension experts teamed up with the University of Arkansas at Rich Mountain Community College to host the first Livestock Judging Camp on June 11-13 on the Mena campus. Walker Antilla, from UA-Rich Mountain, led the camp with help from Extension’s Allison Harmon, Dr. Bryan Kutz and Blake Davis.

Youth ages 14-18 from across Arkansas and from surrounding states learned about priorities in livestock selection, current industry trends and improved their communication skills through the presentation of oral reasons. The instruction covered types in market and breeding cattle, sheep, meat goats, and swine. Participants also learned about live animal parts, carcass relationships and the use of performance data.

Students evaluated some great livestock at Grand Drive Genetics, Billy Minton farms, Maye Club Lambs,



Top Five Overall Winners: Jaret H., Jacob S., Katey C., Jermeire P., Peter L.

Matt Robinson and Family, Ozark show goats, Ellis Drager, and Josh Tadlock and the University of Arkansas teaching farm. On the last day, the youth participated in a judging contest that tested their new knowledge. ■



2024 University of Arkansas at Rich Mountain Livestock Judging Camp.

## Lonoke County 4-H



# Stay Busy at Day Camps

Three dozen Lonoke County 4-H members have enjoyed some seriously fun and engaging summer day camps throughout June.

Lonoke County Extension hosted a fishing derby, where awards were given for most fish, last fish, smallest fish and largest fish caught and the longest cast. Everyone had a great time and boy were there some creative baits used!

A STEM camp featured 10

hands-on stations where 4-H members made color-changing slime, ice cream in a bag, elephant toothpaste, melting fake snow, lava lamps, earth core drilling and soil building, kinetic dough, taste testing, snap circuits and flying drones!



Happy Canning Campers! Left to right (back): Kate M., Mackenzie A., FCS Agent Devyn Britt, Wesley W., UADA Intern Emma Cook, Calvin M. (front): Grace H., Grier H., Towler Z.

Finally, a canning camp helped youth learn about chopping, measuring and canning methods. At the end of the day, youth enjoyed the fruits of their labor —some yummy salsa and strawberry jam. ■





# LEADERSHIP LOG

# BL 5

## **iLEAD III Rounds Out State Tour in Northwest Arkansas**

Members of iLEAD Cohort III finished their year-long leadership development program in Northwest Arkansas.

### **Day One**

*By Brian See, County Extension Agent-Staff Chair, Marion County*

Day one of the iLEAD began with a warm welcome from the Clarksville research station director Jackie Lee. She gave us a brief history of the station and its important research. It was all very interesting. For example, the blackberry breeding program at the station has an amazing legacy with most tame blackberries today deriving from the University of Arkansas System Division of Agriculture (UADA) lineage. Once we were welcomed, it was time for a tour of the research fields. Read details [here](#).

### **Day Two**

*By Sun-Ok Lee, Associate Professor, Food Science*

Day two was a dynamic exploration, highlighting the remarkable work being done in the departments of Food Science, Poultry Science, and Entomology and Plant Pathology. Read details [here](#).

## **LeadAR Class 20 June Virtual Seminar Recap**

*By Rachel Bearden, County Extension Agent - Agriculture*

The June session of LeadAR was a very insightful session focusing on commodity boards, the library system, and preparing for the upcoming international study tour to Morocco. Read details [here](#).



## **Leadership Lunch and Learn Book Review: Out of Office**

*By Kristin Higgins*

In the latest Leadership Lunch and Learn series, Kristin Higgins with the [Public Policy Center](#) reviewed a book about remote work outside the crisis of a pandemic. "Out of Office: The Big Problem and Bigger Promise of Working from Home" by Charlie Warzel and Anne Helen Peterson explores the profound impact of remote work on individuals, organizations and society at large. The authors are journalists who delve into the complexities and consequences of the shift to remote work accelerated by the COVID-19 pandemic. Read details [here](#). Watch the recording [here](#). ■

# Summer Cereal Drive

Chi Epsilon Sigma banded together once again this year to ask the UADA community to help support the 24th Annual Summer Cereal Drive through the Arkansas Food Bank.

Donation sites were spread throughout the state at the Arkansas 4-H Center, Don Tyson Center for Agricultural Sciences in Fayetteville, and the Little Rock State Office plus an online option.

Every dollar donated provided a box of cereal to someone in need. This year, Dr. Deacue Fields announced the cereal drive on UADA Today, and the donations started pouring in. We collected 190 boxes total in Little Rock and Fayetteville. The online donation total was \$1309.20, making a grand total of 1,499 boxes. Thank you to all that donated! ■



Chi Epsilon Sigma members with items collected for the Cereal Drive. Johnny Woodley, Amy Hedges, Nytalya Salter, Laquita Desmuke, Genean Butler, Cindy Maddox, and Lisa Barnes.



## CIO UPDATES: UADA Cloud Storage Migration Update

The UADA Box-to-OneDrive copy/migration of your individual Box folders/files to your @uada.edu OneDrive cloud storage account began on Friday, June 14th, 2024. *Reminder: This project does not impact your UARK Box folders/files.*



Now that the migration process has started, we ask that you please not move any folders/files around within or outside of the Box Migration folder in your UADA OneDrive account. Doing so will cause the reoccurring (delta) syncs to copy the same folders/files again to the Box Migration folder in your UADA OneDrive account. We will let everyone know when all syncs have been completed.

## Bluetooth Security

Bluetooth connections to your mobile devices can be used to connect to wireless headsets, transfer files, and enable hands-free calling while you drive, among other things. Most of the time, a user must allow a Bluetooth connection to occur before data is shared - a process called "pairing" - which provides a measure of data security. But just like Wi-Fi connections, Bluetooth can put your personal data at risk if you are not careful. Here are some steps you may wish to take when using Bluetooth:

- Turn Bluetooth off when not in use. Keeping it active enables hackers to discover what other devices you connected to before, spoof one of those devices, and gain access to your device.
- If you connect your mobile phone to a rental car, the phone's data may get shared with the car. Be sure to unpair your phone from the car and clear any personal data from the car before you return it. Take the same steps when selling a car that has Bluetooth.



- Use Bluetooth in "hidden" mode rather than "discoverable" mode. This prevents other unknown devices from finding your Bluetooth connection.

Provided by the [Federal Trade Commission](#) (FCC).

## Zoom Pro Tip

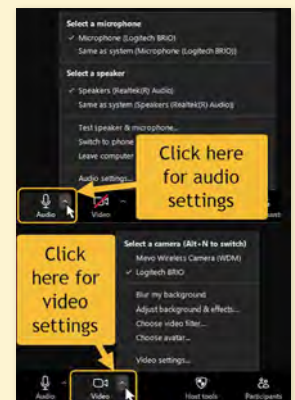
Joined a meeting and can't hear anyone? They can't hear you? Maybe the camera isn't working the way you were expecting. Here are a couple of tips on how to troubleshoot after you've joined a meeting.

First, check that your audio settings are correct by clicking on the small up arrow next to the Audio button. Here you will find microphone and speaker selections.

Alternate between available options to find the one that works.

Next, check that your video settings are correct by clicking on the small up arrow next to the Video button. Here you will find the camera selection. You can also choose to blur your background or use the Adjust background & effects settings to choose a virtual background from this menu.

Learn how to [test your audio](#) or [test your video](#) before a meeting on the Zoom Support page.



## Hump Day Hacks

- [Getting started with Microsoft Loop](#)
- [How to Find your Shared Folder or Files in OneDrive](#)
- [Use Conditional Formatting to find blank cells in Excel](#)
- [How to Start Meeting Summary with Zoom's AI Companion.](#) ■



## 2024 TECH TUESDAY WEBINARS

Have you missed any past Tech Tuesday webinars or want to join future webinars? Check out the recordings and other resources on the [Tech Tuesday Blog page](#). Did you miss June's Team Dynamix - UADA's Unified Service Desk Tech Tuesday? Check out the recording and resources.





# Discovery Farm Field Day

BL  
7

Extension's Family and Consumer Sciences unit showcased some of their work with a food tasting event during the Anheuser Busch - Discovery Farm Partnership Field Day.

FCS educators Leigh Ann Bullington and Keith Statham-Cleek worked with new Delta District FCS agents Brianna Sheppard from Woodruff County and Mattie Ricker from Cross County, along with FCS interns David Opiri and Ryan Fewell, to organize a food tasting activity to a large audience of rice producers in northeast Arkansas.

The original and healthy chicken and rice recipe was developed using ARoma 22 rice, a new Jasmine -type line bred by UADA researchers for the U.S. demand for aromatic rice. It represents an opportunity for U.S. farmers to expand production and lower the dependency on aromatic rice imports.

The FCS team created a healthy version of an old family favorite recipe that is prepared with an electric pressure cooker for a quick, easy-to-prepare weeknight meal. The creamy dish is low in fat and sodium. It contains chicken, onions, celery, red bell pepper, carrots, a variety of seasonings and is finished with Parmesan cheese and fresh parsley. Participants received a recipe card and a sample of ARoma 22 along with their tasting sample. ■



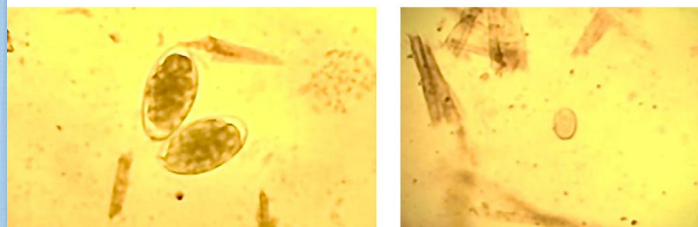
FCS representation from left to right: Keith Statham-Cleek, Leigh Ann Bullington, Christie Wagley (Poinsett Co.), Mattie Ricker (Cross Co.), Brianna Sheppard (Woodruff Co.), and David Opiri (Experiential Scholars Program intern).

## Small Ruminant Program Helps Producers

With all the rain and warm temperatures we have experienced in the past three months, internal parasite infections in sheep & goats have grown dramatically, causing decreased appetite, digestion impairment, scours, anemia and high mortality rate. County agents are on alert, and Small Ruminant Specialist Dr. Dan Quadros are assisting producers to identify the issues, implement good management practices, and treat infected animals properly. The worst cases are when barber pole worm (*Haemonchus contortus*) and coccidia (*Eimeria* spp.) occur simultaneously. Coccidia are transmitted by contaminated forage, feed, and water.

The recommendations to combat coccidiosis include hygiene of the environment, water troughs and feeders, isolation of sick animals, reduction of overcrowding in pens and stress factors, use of coccidiostats and appropriate nutrition. Barber pole worm is a blood-feeding parasite, very pathogenic and prolific, that causes significant problems for producers. Due to the widespread parasite resistance to commercially available dewormers, controlling barber pole worm requires an integrated parasite management program involving pasture management, genetic

improvement, nutrition, and frequent inspections, among other practices. Producers are advised to consult their veterinarian to determine the best treatment. Furthermore, the Small Ruminant Extension Program is educating producers about parasite management through workshops, online articles, and social media posts. ■





# Build a Bigger Boat

Hot Spring County Extension Staff Chair Rachel Bearden hosted “Build a Bigger Boat: Program Development and Resource Collaboration Training” for extension agents and high school agriculture teachers on June 5.

The training walked through resources and programming and created opportunities for educators to collaborate on program ideas and ways to be more successful in their respective programs.

This training highlighted the advantages of 4-H and FFA working together to provide more opportunities for youth. Topics included Partnerships in Programming, Ag in the Classroom Resources, 4-H and FFA contests, county Farm Bureau programs, Arkansas Farm Bureau resources, and curriculum options. Representatives from extension, Bismarck FFA and Arkansas Farm Bureau all spoke to participants.

After the training, participants reported a better understanding of 4-H, FFA, and Farm Bureau roles and partnership

opportunities. Several participants also plan to work together with their agent, agriculture teacher, and local Farm Bureau to maximize their program’s opportunity in their community. ■



Matt Jackson, ArFB discusses mobile classroom options available to educators.



Participants collaborate on 4-H and FFA contest opportunities.

## 4-H Shooting Sports Fundraiser

Miller County 4-H hosted a shooting sports fundraiser at Rocky Creek Ranch in Texarkana on June 15 to raise money for the county’s 4-H shooting sports team. Forty-four youth competed, and 28 volunteers helped with event, which raised \$3,000.

Through the 4-H Youth Shooting Sports program youth learn marksmanship, safe and responsible use of firearms, the principles of hunting and archery and more.

“These are just a part of the goals we seek as we work with youth in the Miller County Shooting Sports club,” Miller County 4-H agent McKenzie Ridgon said. “We are finding that it enhances responsible behavior, creates lasting friendships, and honors a tradition of sportsmen from centuries past.” ■

Below: Miller County 4-H Agent, McKenzie Ridgon (far left) stands with youth and adults who volunteered to make the 4-H Shooting Sports fundraiser, not only a fun event, but a success.





# Equine Instructor and Ranch Horse Team Coach Named

After a national search, Amanda Baxter has been hired as equine instructor in Animal Science and will join the Department Aug. 12.

Baxter earned B.S. and M.S degrees at Texas A&M University where she served as the assistant coach of the ranch horse team. She has extensive experience in 4-H horse judging contests and clinics, and she interned as a wrangler at Camp War Eagle in Arkansas. She will be responsible for teaching undergraduate courses, coordinating student competitive activities including equine judging and ranch horse team activities, and co-managing the resident horse herd and the Dorothy E. King Equine Pavilion on campus. ■



AMANDA BAXTER

## NACDEP Conference

UADA-Extension's Community, Professional, and Economic Development team received great recognition at the National Association of Community Development Extension Professionals Conference in Houston on June 17-20.

Brandon L. Mathews and Kamelle Gomez, program associates in economic development, were awarded the Educational Materials Team Award for the Southern Region. The team was recognized for their excellent social media, video, and print materials created through the SBA Business Navigator grant that concluded in November 2023.

The Extension Health Ambassadors Team, a partnership between FCS and CPED, received the Southern Region Runner-up Cross Team Award. Team members include Terrie James, Jessica Rodriguez, JoAnn Vann, Pamela Luker, Pam Pruett, Julie Goings, Tabatha Duvall, Heather Wingo, Vivian Okanume, Jessica Vincent, Bryan Mader and Hunter Goodman. The team was recognized for its cross-program team that has built 30 County Extension Health Ambassadors in six counties across Arkansas using an asset-based community development approach.

The FORWARD (Future Opportunities for Rural Workforce and Rural Development) Curriculum national team received the national runner-up award for Educational Materials. Terrie James, Hazelene McCray, Danielle Watson, Tabatha Duvall and Hunter Goodman implemented the curriculum in Arkansas. FORWARD is a national community

development curriculum created by extension professionals for extension professionals' use to build workforce development pathways in their county.



UADA-Extension leaders were active presenters throughout the conference with Hazelene McCray and Danielle Watson sharing their workforce development work and impact as extension agents during the Workforce Development 101 post-conference. Terrie James shared the Extension Health Ambassadors program. Brandon L. Mathews gave a great presentation on content creation. McCullough and Mathews shared the results of the Create Bridges project. Goodman facilitated a Community Development 101 pre-conference with Southern Regions colleagues and a Workforce Development 101 post conference for Extension staff.

The CPED team had an outstanding 2024 NACDEP Conference! ■



# Bonnie Teater Lifetime Achievement Award

Dr. Stacey McCullough received the 2024 Bonnie Teater Lifetime Achievement Award Recipient by the Southern Rural Development Center (SRDC) for her over 20 years of experience working with community and economic development at the local, regional, institutional and national levels. McCullough's career is characterized by a servant-leadership, data-driven approach to program development and institutional change that are people and impact focused; leadership driven by investment in people; and research designed to strengthen local community investment and capacity for quality of life. Leading by example, McCullough mentors and supports her team to continue the work she initiated through UADA Extension. Dr. Hunter P. Goodman, Assistant

Professor, Community, Workforce, and Economic Development at UADA, stated, "Dr. McCullough embodies the Land Grant mission to higher education and the unique calling of Extension to impact the lives of people and communities through research and best practices along with community voice." Read more [here](#). ■

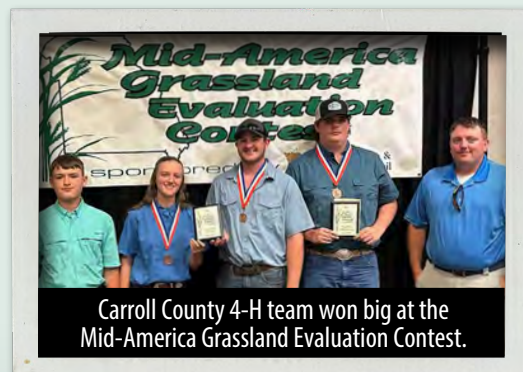


# Mid-America Grassland Evaluation Contest

4-H teams from Carroll and Independence counties won big at the Mid-America Grassland Evaluation Contest in Springfield, Missouri. Gabbi M. (Independence County) won first place in individual and team awards. Jason M. (Carroll County) won third place in individual and team awards. Coaches Michelle M. and Monty R. led the teams that represented Arkansas well on the national stage against five other teams from the Midwest and South.

The teams advanced from the Arkansas Grassland Evaluation Contest where students assess grassland condition for

soil, plant, and animal performance, as well as conservation. Students then make management decisions to improve the grassland.



Participants learned about current issues regarding pasture and hay land in the eastern U.S. The coaches also expressed how this contest has improved their skillset in Extension, particularly in understanding grazing systems, plant identification, and wildlife management. An in-service for training agents about this contest is

planned for this fall. ■



# Grants & Contracts

PROJECT TITLE	AWARD AMOUNT	PI	GRANTING AGENCY
Soy Chef Mini Grant	3,500	Christine Sasse	B & B Legacy Farms, LLC
LeadAR 2025	5,000	Julie C. Robinson	Arkansas Rice Research and Promotion Board
Arkansas Future Ag Leaders Tour 2025	5,000	Julie C. Robinson	Arkansas Rice Research and Promotion Board
Developing Climate-Smart Grain Markets in the Mid-South	41,901	Mike Daniels	Mississippi State University
FY25 Best Care Funding	322,500	Rebecca M. Simon	Arkansas Department of Education
Best Care, Best Care Connected & Guiding Children Successfully Program Funding FY25	225,625	Rebecca M. Simon	Arkansas Department of Education
Farm Service Agency Farm Tax Education and Asset Protection Program	30,000,000	Ron Rainey	USDA
Arkansas Cotton Disease Predictive Tool Development	63,270	Terry N Spurlock	Agricultural Research Service (USDA ARS)
Bayer Work Order No. 12	7,315	Tom Barber	Bayer CropScience LP
Southern Root-Knot Nematode in Maturity Group 4 Soybean	75,000	Travis Faske	Mid-South Soybean Board
<b>TOTAL AWARDS FOR JUNE 2024: \$30,749,111</b>			

## COMMUNICATIONS



## STATION

Got an event? Submit events for the UADA Calendar: [uada.edu/add-events](http://uada.edu/add-events).

View other calendar events at [calendar.uada.edu/](http://calendar.uada.edu/). You can search for events by date, type of event, and by topics.

### Publications: What's New

- FSA3162 [Fecal Egg Counts in Arkansas Livestock](#)
- FSA6168 [Arkansas Diamonds: Hot Blooded](#)
- FSA6166 [Arkansas Diamonds: Purple Heart](#)
- FSA6167 [Arkansas Diamonds: Beach Bum Blue](#)
- FSA6165 [Arkansas Diamonds: Blue Star](#)
- FSA6164 [Silvery Thread Moss](#)

Need any publication work? Please contact Oliver Williams at [owilliams@uada.edu](mailto:owilliams@uada.edu) or Emily Davis at [edavis@uada.edu](mailto:edavis@uada.edu)

### News

Got a news tip or story you'd like to see? Email Tracy Courage, [tcourage@uada.edu](mailto:tcourage@uada.edu). View all our July news stories online [here](#).

### Social Media Toolkit

Communications provides monthly social media kits with half a dozen graphics on topics relevant to the month. Graphics and suggested texts are emailed out at the end of the month and also accessible on our Communications webpage under Social Media. Scroll down to Creating Content. Click Social Media Assets. Find assets grouped by season and month.

### Video

Check out our new video: Blackberry Jam [here](#).

### Web

Check out new webpages: [10 Things to Protect Stormwater](#). ■



# Benefits Corner

## Education Benefits

Tuition discounts are available for employees of all campuses within the University of Arkansas System, regardless of the campus where you are employed. There are no discounts for courses taken at a non-University of Arkansas System campus.

Tuition discount benefits are available for tuition only; all applicable fees must be paid in full.

All active, full-time (100% appointed) benefits-eligible employees, their spouses and eligible dependents can receive tuition discount benefits.

Eligible dependents are considered your spouse or unmarried dependent child as defined by the Internal Revenue Service.

You are eligible for discounts on the final day of regular registration following your continuous employment in a full-time position at the university for one complete fall or spring semester.

Each campus may have a different definition of a full-time student. Check with the campus that you are enrolling in to confirm required credit hours.

You must apply for tuition discounts. For application instructions, and information about exclusions and limitations, contact: [humanresources@uada.edu](mailto:humanresources@uada.edu).

For general benefit questions, please email [yourbenefits@uada.edu](mailto:yourbenefits@uada.edu). ■

# Personnel Changes



## Welcome Aboard:

**Samantha Benton** – Administrative Specialist II, Washington County

**Joel Phillips** – County Extension Agent, Family & Consumer Science, Newton County

## Farewell to:

**Robin Ann Hollis** – Administrative Specialist III, Bradley County

**Katelyn Kirkham** – County Extension Agent - Family and Consumer Science, Nevada County

**Tammy Green** – Finance Assistant Vice President for Finance and Administration, LRSO

**Linda S. Oliphant** – Administrative Specialist II, Benton County

**Amanda Welch** – 4-H & Youth Development, 4-H Youth Development Association, LRSO

**Tierra Hutley** – Community, Professional, & Economic Development, APEX Accelerator: Procurement Counselor, LRSO