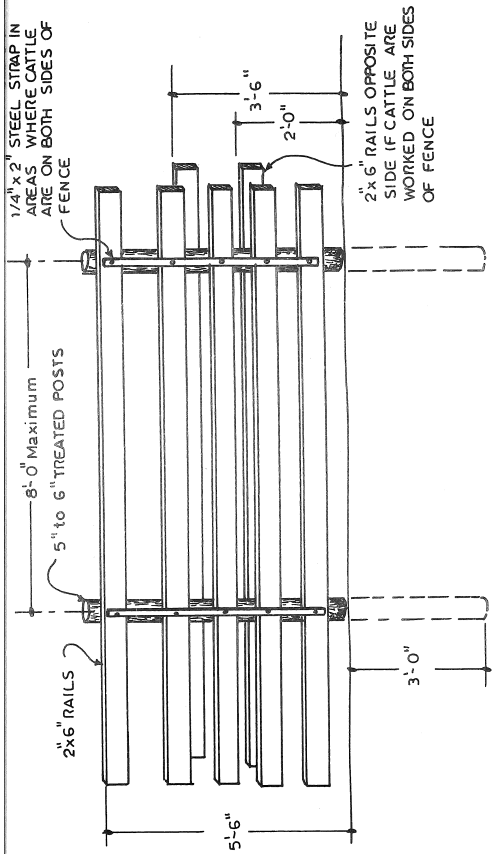
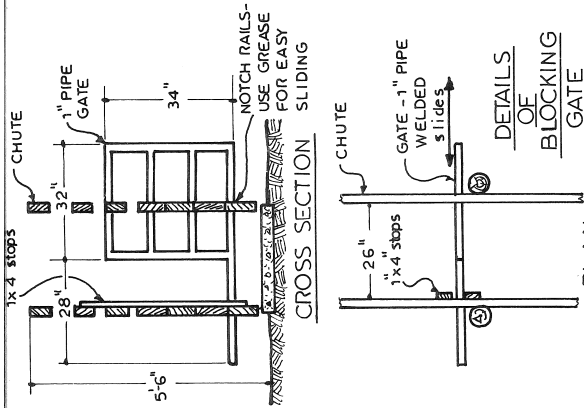
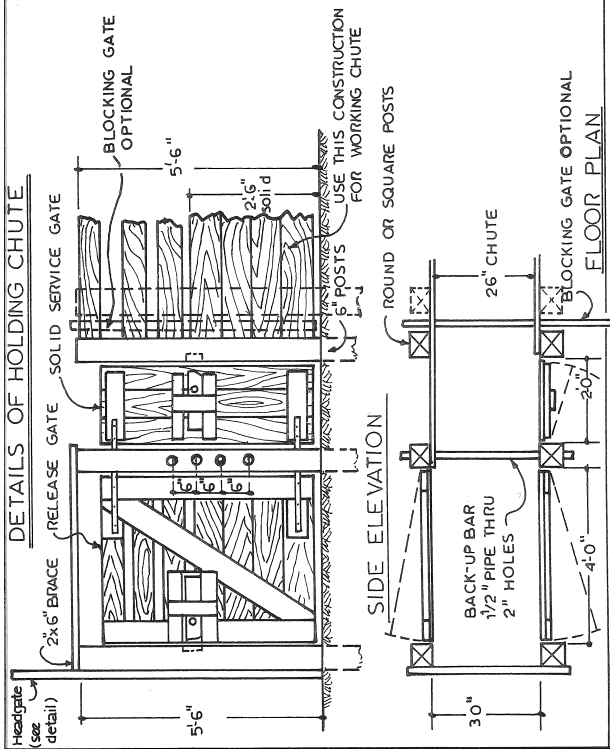
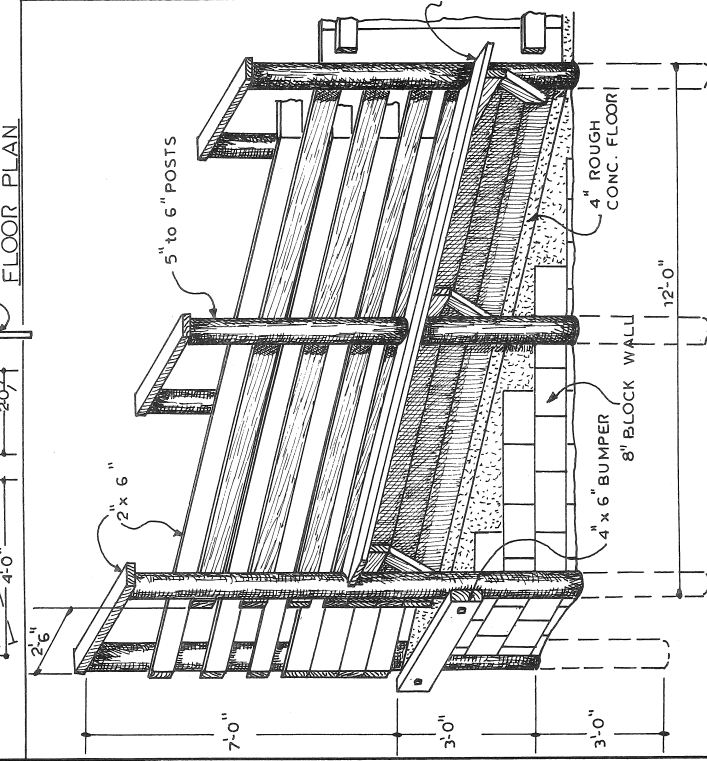
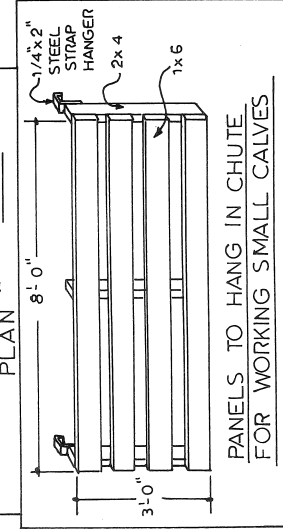


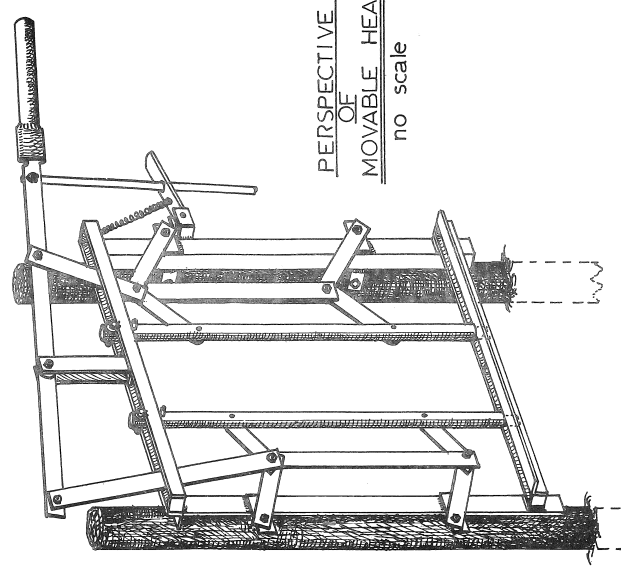
DETAILS OF HOLDING CHUTE



TYPICAL FENCE

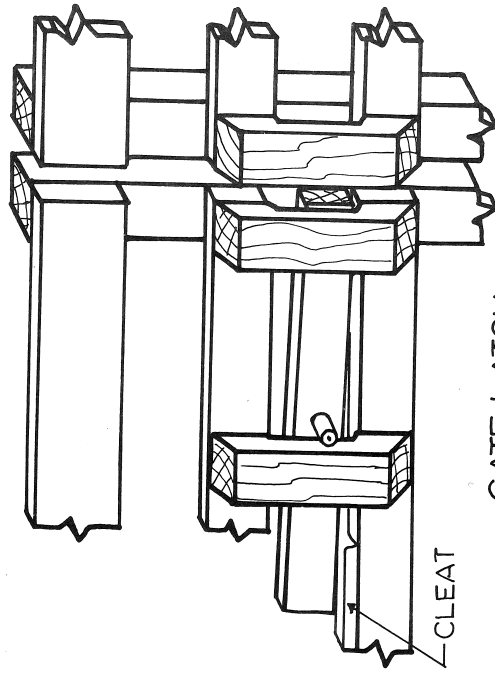


LOADING RAMP DETAIL

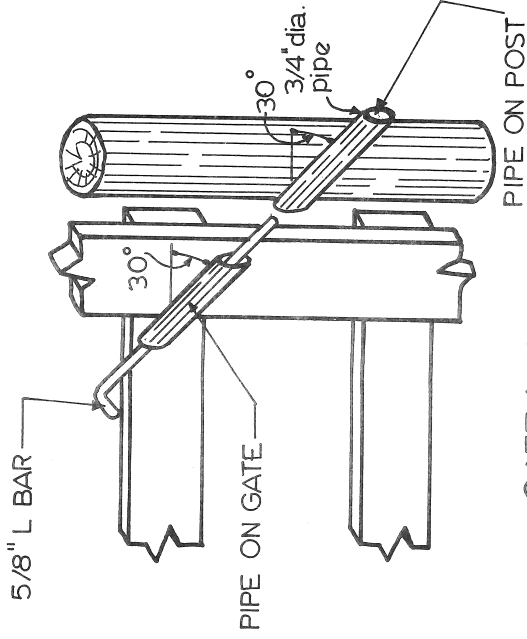


PERSPECTIVE
OF
MOVABLE HEADGATE
no scale

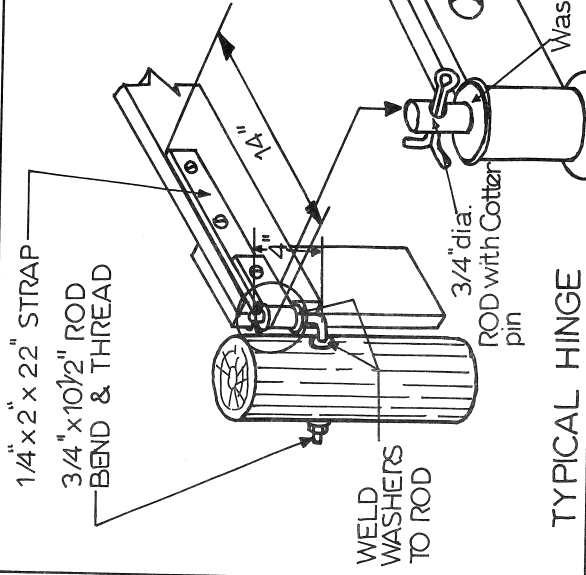
CATTLE CORRAL		SHEET 2 of 5	
PLAN NO. 875003	COOPERATIVE EXTENSION SERVICE	U. S. Department of Agriculture Cooperating	
University of Arkansas Division of Agriculture			



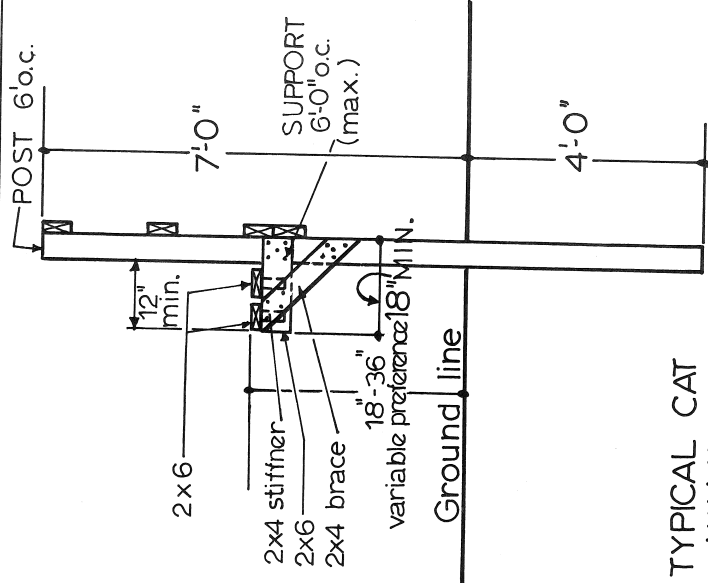
GATE LATCH



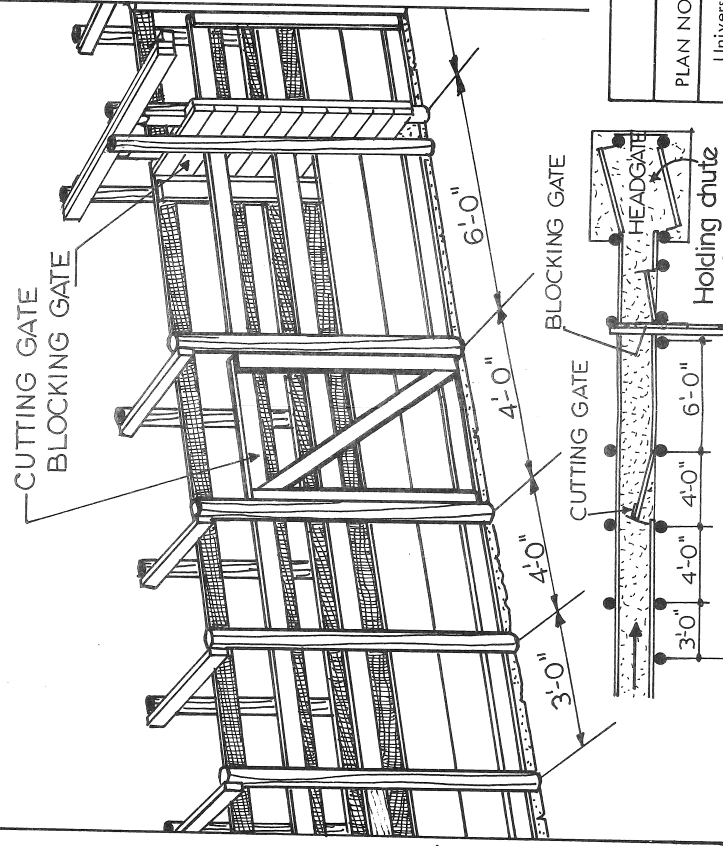
GATE LATCH



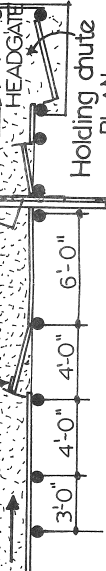
TYPICAL HINGE



TYPICAL CAT WALK



FULL SWING HINGE



CUTTING GATE

CATTLE CORRAL

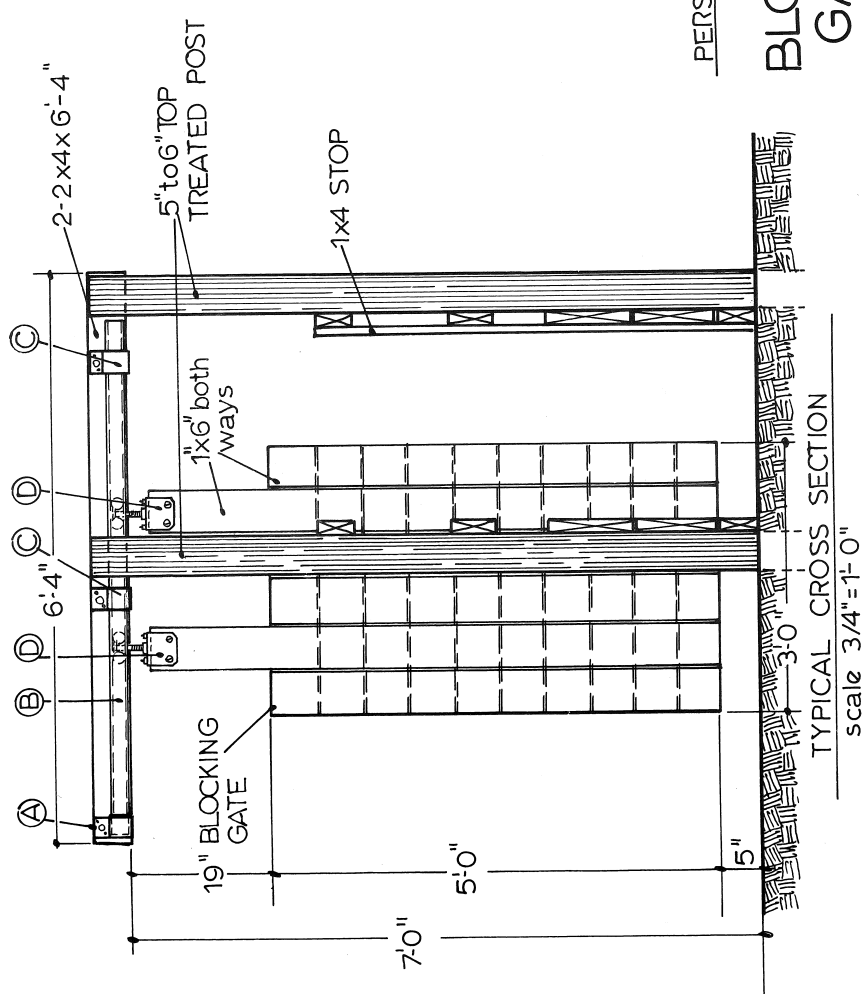
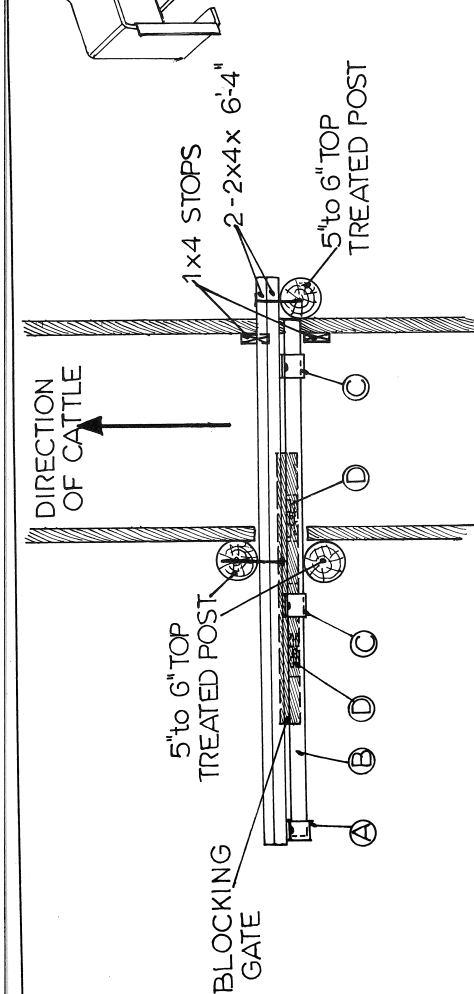
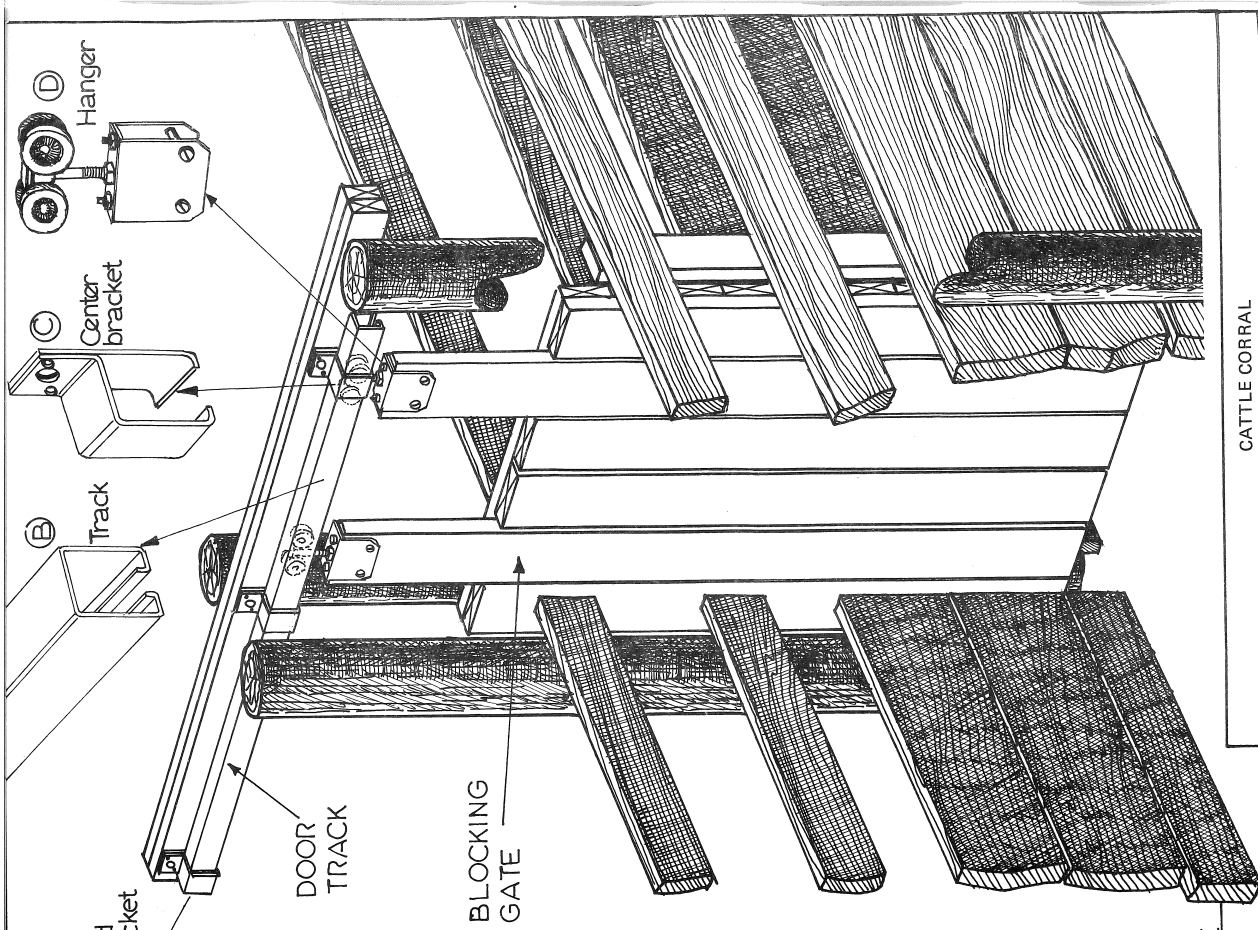
PLAN NO. 875003

COOPERATIVE EXTENSION SERVICE

SHEET 3 of 5

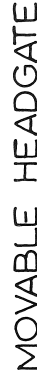
University of Arkansas
Division of Agriculture

U. S. Department of Agriculture
Cooperating



PERSPECTIVE BLOCKING GATE TYPICAL CROSS SECTION scale 3/4"=1'-0"

CATTLE CORRAL		
PLAN NO. 875003	COOPERATIVE EXTENSION SERVICE	SHEET 4 of 5
University of Arkansas Division of Agriculture		U. S. Department of Agriculture Cooperating



2" PIPE

COTTER PIN

1/8" D X 1"

3/8" x 2" x 38 1/2"

STRAP

1/4" x 2" x 38 1/2" L IRON

3/16" x 2" x 50" L IRON

WELD TO PIPE

1/2" HEX BOLT
W/ WASHER WELD
NUT IN PLACE

1/2" HEX BOLT W/ 3
WASHERS. WELD
NUT IN PLACE

3/8" x 2" x 5" PLATE
(4 REQ.) FOR
MOUNTING TO
FIXED POSTS

POST

ROLLER 1/2" ϕ x 1/2"

1/2" WASHER WELD
TO
PIN 1/2" D X 4"

SECTION C-C



CATTLE CORRAL		
PLAN NO. 875003	COOPERATIVE EXTENSION SERVICE	SHEET 5 of 5
University of Arkansas Division of Agriculture		U. S. Department of Agriculture Cooperating

Disclaimer

This site makes available conceptual plans that can be helpful in developing building layouts and selecting equipment for various agricultural applications. These plans may be outdated and do not necessarily represent the most current technology, construction codes, or agricultural practices. They are not construction plans and do not replace the need for competent design assistance in developing safe, legal and well-functioning agricultural building system. The University of Arkansas Cooperative Extension Service, the United States Department of Agriculture and none of the cooperating land-grant universities warranty these plans.