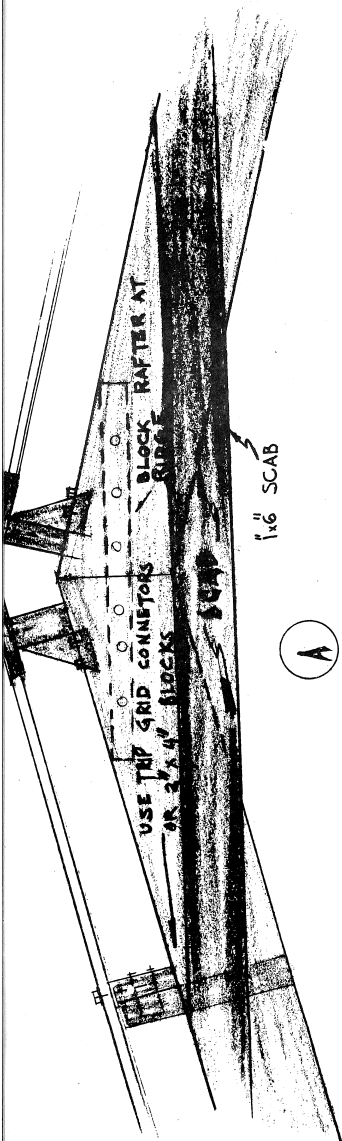


P L A N

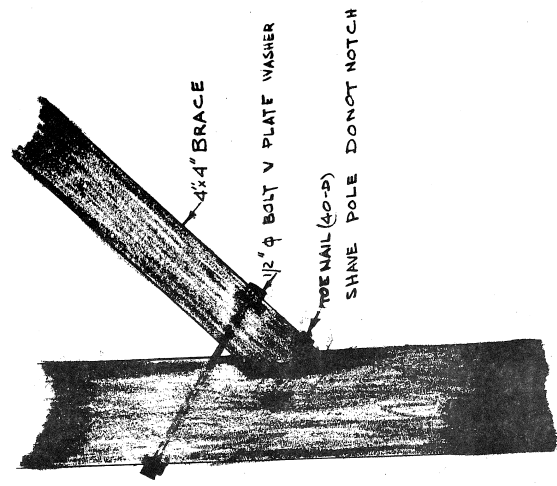
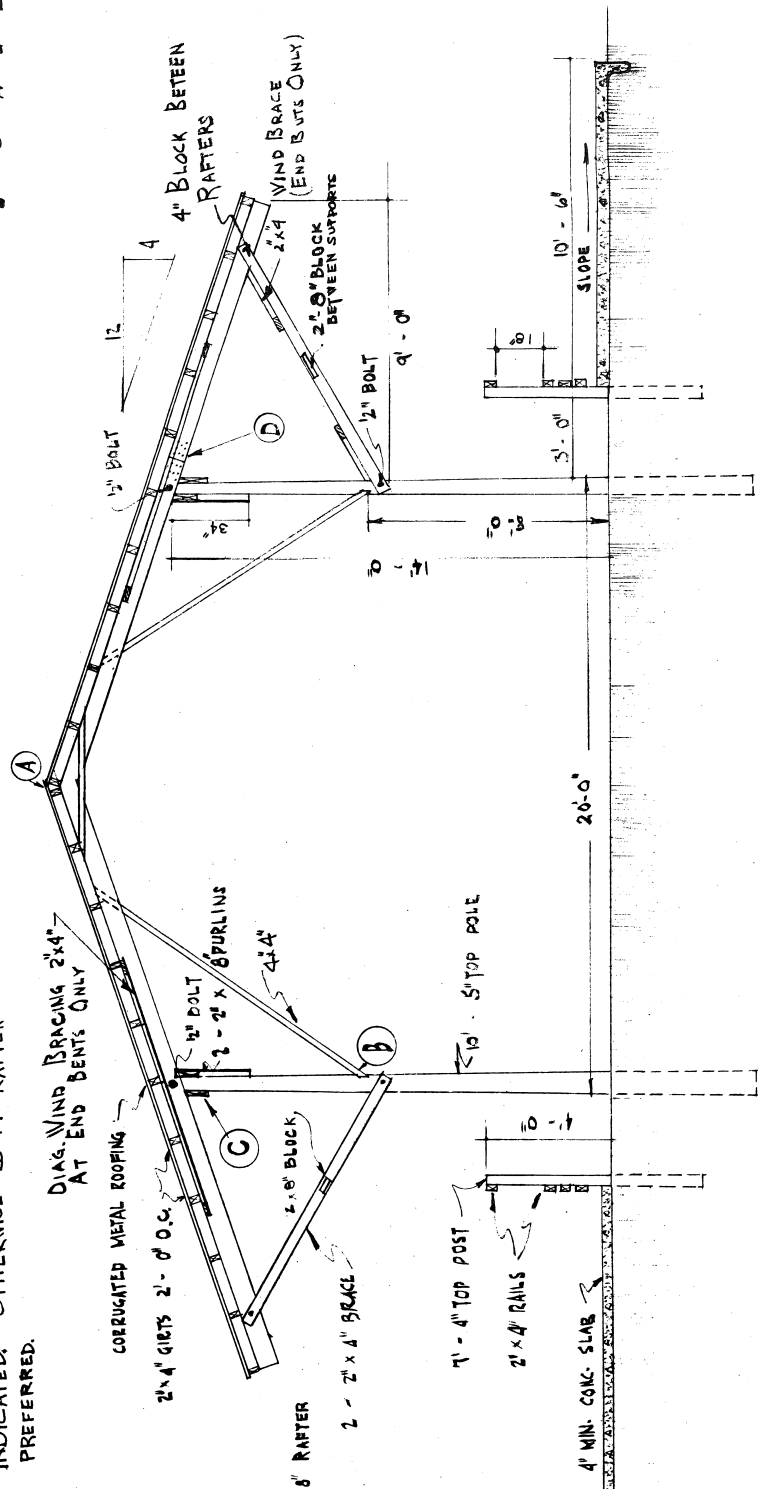
HAY STORAGE	
PLAN NO. 615002	Agricultural Extension Service
SHEET 1 of 4	
University of Arkansas	
U. S. Department of Agriculture	



NOTE: OPTIONAL, IF 20 FT. RAFTERS NOT AVAILABLE AT REASONABLE COST, USE 12 AND 8 FT RAFTERS. USE JOINTS EITHER DETAIL SHOWN IN (D). LOCATE JOINT WHERE INDICATED, OTHERWISE 20 FT RAFTER PREFERRED.

(A)

SCALE 1 1/2" = 1'-0"



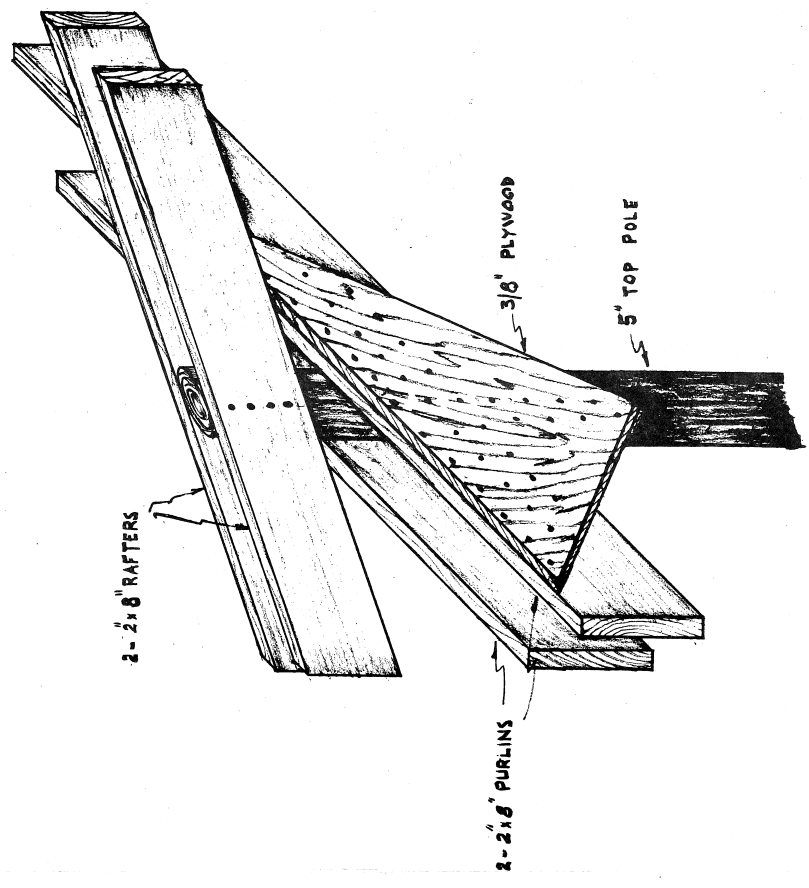
(B)

SCALE 1 1/2" = 1'-0"

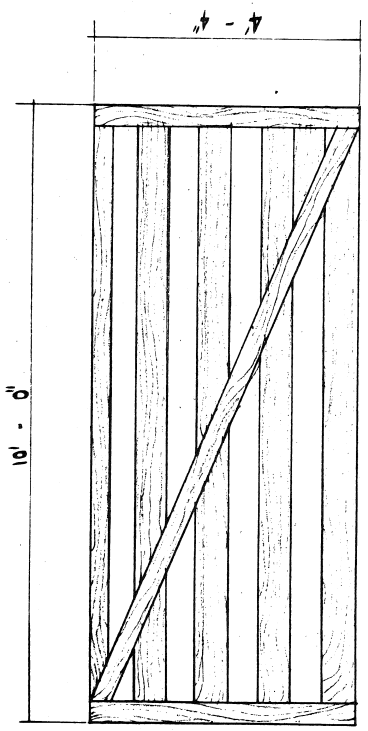
ROSS SECT ION

HAY STORAGE	
PLAN NO. 615002	Agricultural Extension Service
SHEET 2 of 4	
University of Arkansas Division of Agriculture	U. S. Department of Agriculture Cooperating

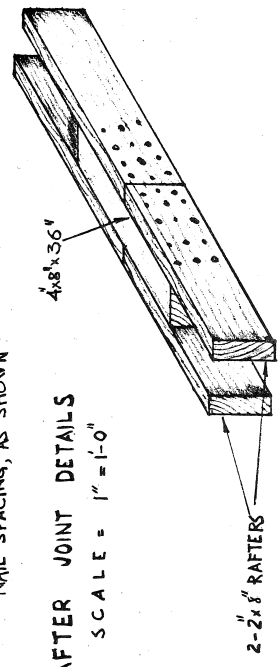
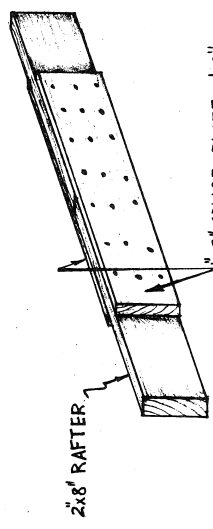
C



NO SCALE



G A T E D E T A L L
 3/2" = 1" - 0"

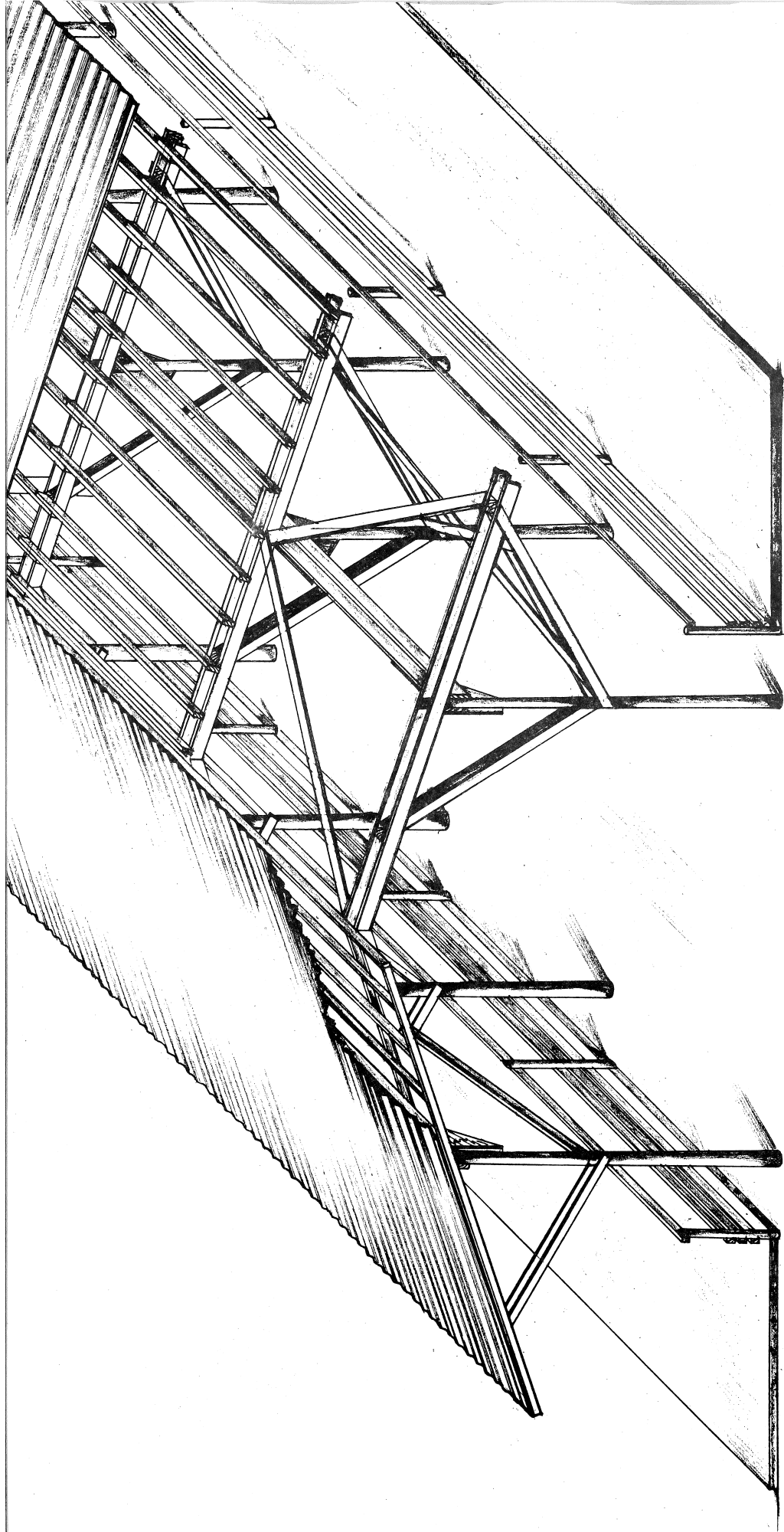


RAFTER JOINT DETAILS

SCALE = 1" = 1'-0"

D

HAY STORAGE	
PLAN NO. 615002	Agricultural Extension Service SHEET 3 of 4
University of Arkansas Division of Agriculture	U. S. Department of Agriculture Cooperating



HAY STORAGE

PLAN NO. 615002

Agricultural Extension Service

SHEET 4 of 4

University of Arkansas
Division of Agriculture

U. S. Department of Agriculture
Cooperating

Disclaimer

This site makes available conceptual plans that can be helpful in developing building layouts and selecting equipment for various agricultural applications. These plans may be outdated and do not necessarily represent the most current technology, construction codes, or agricultural practices. They are not construction plans and do not replace the need for competent design assistance in developing safe, legal and well-functioning agricultural building system. The University of Arkansas Cooperative Extension Service, the United States Department of Agriculture and none of the cooperating land-grant universities warranty these plans.