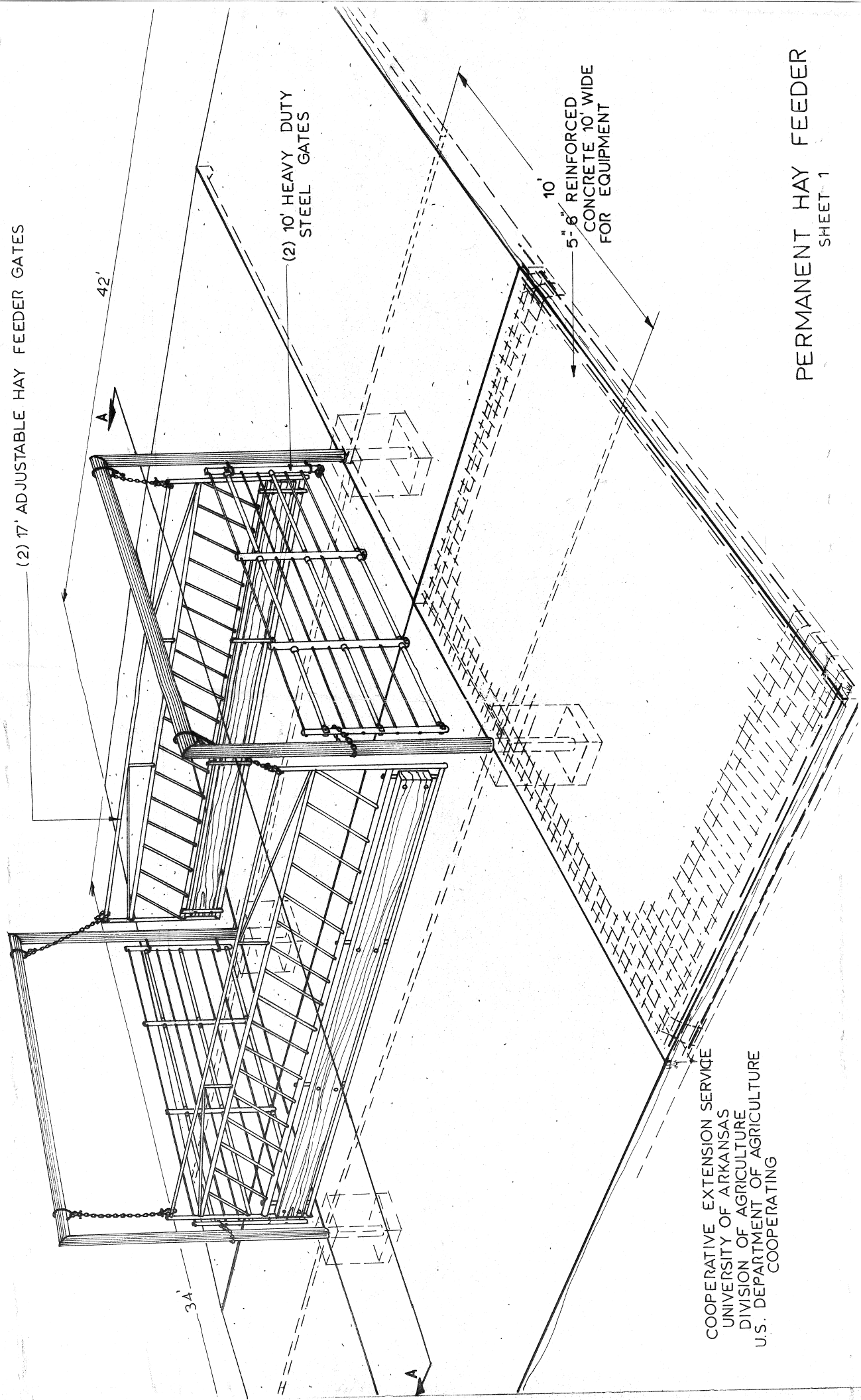


(2) 17' ADJUSTABLE HAY FEEDER GATES

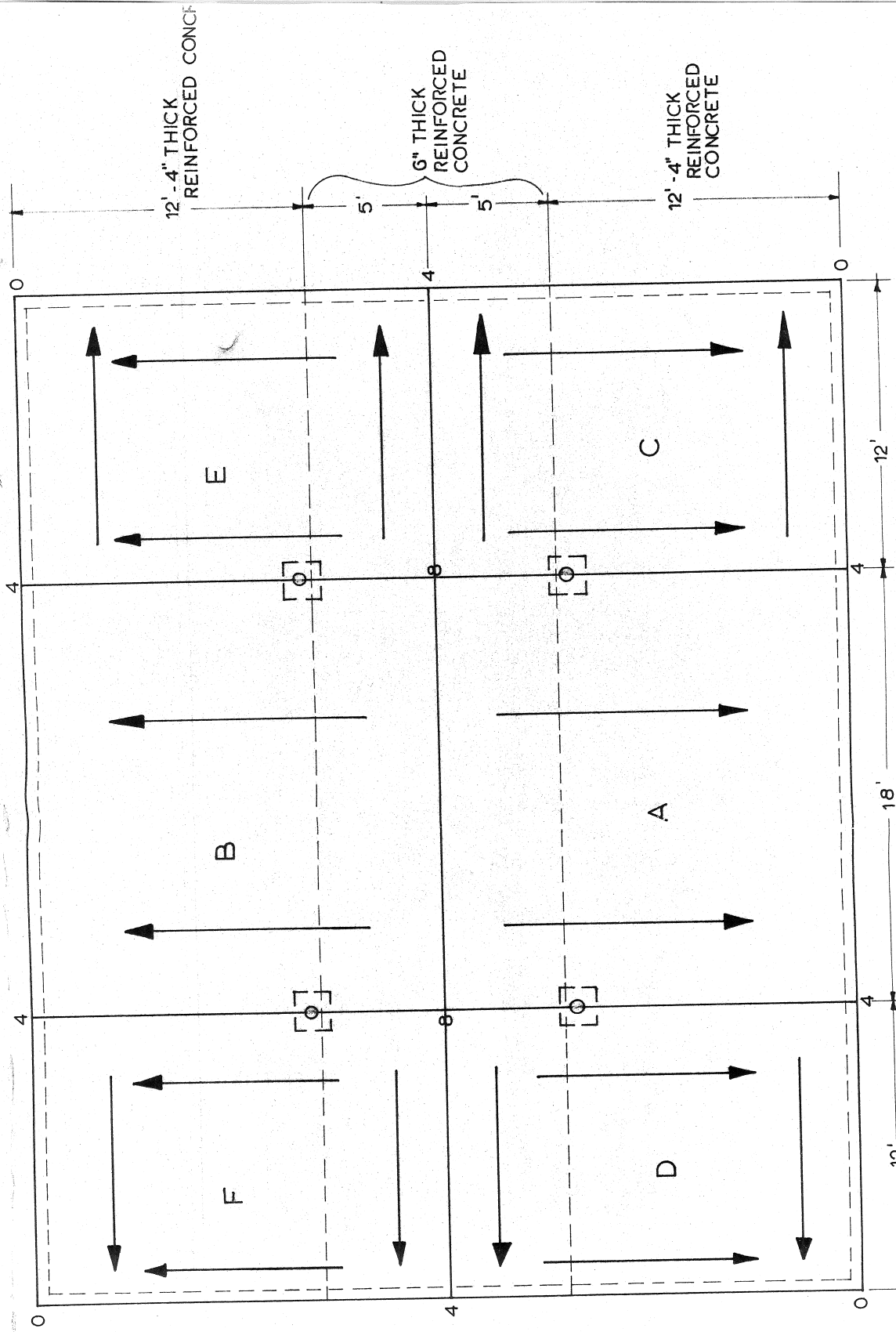


(2) 10' HEAVY DUTY
STEEL GATES

10'
5'-6" REINFORCED
CONCRETE 10' WIDE
FOR EQUIPMENT

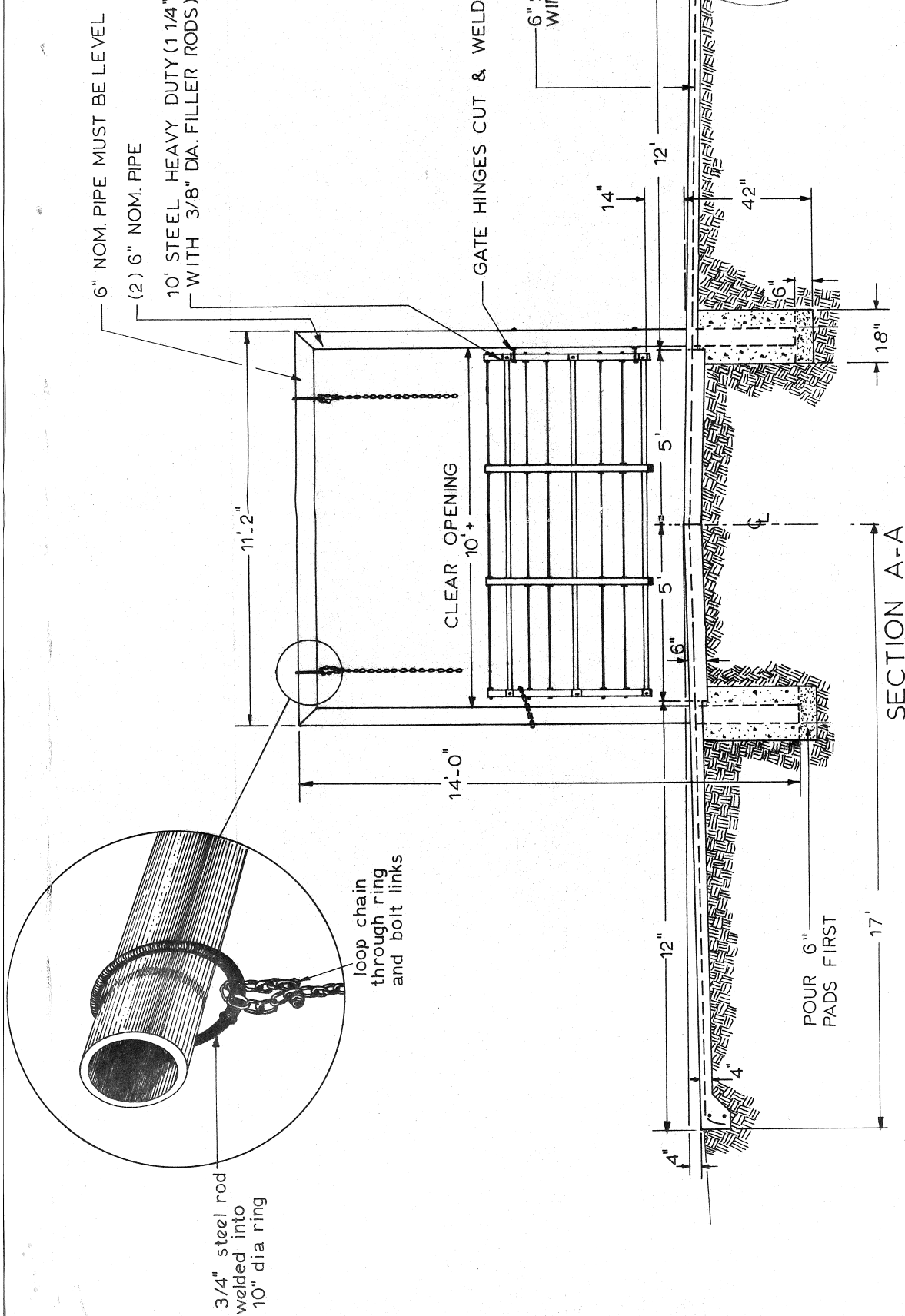
PERMANENT HAY FEEDER
SHEET 1

COOPERATIVE EXTENSION SERVICE
UNIVERSITY OF ARKANSAS
DIVISION OF AGRICULTURE
U.S. DEPARTMENT OF AGRICULTURE
COOPERATING



ARROWS INDICATE DOWNSLOPE, NUMBERS SHOW RELATIVE ELEVATION ABOVE ZERO
 LETTERS SUGGEST ORDER OF POURING SLAB

FLOOR DETAIL
 1/4" = 1'-0"



6" NOM. PIPE MUST BE LEVEL
 (2) 6" NOM. PIPE
 10' STEEL HEAVY DUTY (1 1/4" STEEL PIPE FRAME
 WITH 3/8" DIA. FILLER RODS) GATE

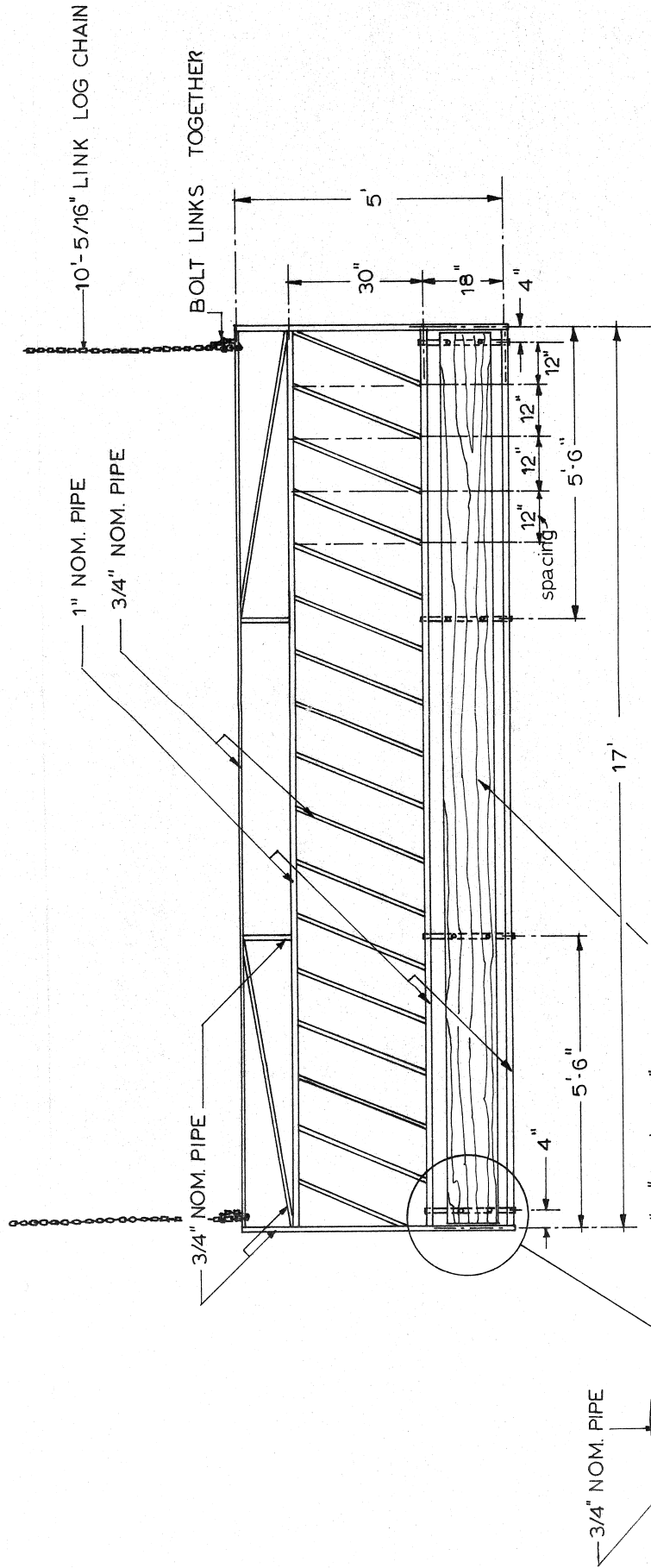
GATE HINGES CUT & WELDED TO POST

6" SQ. WELDED STEEL
 WIRE MESH (10 ga.)
 (2) #4 steel
 re. reinforcement
 rods

TYPICAL AROUND
 ENTIRE PERIMETER

SECTION A-A
 GATE DETAIL AND FLOOR CROSS-SECTION

scale 3/8" = 1'-0"



Disclaimer

This site makes available conceptual plans that can be helpful in developing building layouts and selecting equipment for various agricultural applications. These plans may be outdated and do not necessarily represent the most current technology, construction codes, or agricultural practices. They are not construction plans and do not replace the need for competent design assistance in developing safe, legal and well-functioning agricultural building system. The University of Arkansas Cooperative Extension Service, the United States Department of Agriculture and none of the cooperating land-grant universities warranty these plans.